

REVIEWED

By Anne Nord at 11:34 am, Apr 09, 2024

4/6/2024

Bylee

Worklist: 6758

<u>LAB CASE</u>	<u>ITEM</u>	<u>ITEM TYPE</u>	<u>DESCRIPTION</u>	
C2024-0539	1	UCK	AM 28 Urine Multi-Drug Confirmation Panel 1 by LC-	
C2024-0539	2	UCK	AM 28 Urine Multi-Drug Confirmation Panel 1 by LC-	
C2024-0539	3	UCK	AM 28 Urine Multi-Drug Confirmation Panel 1 by LC-	
C2024-0539	4	UCK	AM 28 Urine Multi-Drug Confirmation Panel 1 by LC-	
C2024-0564	1	BCK	AM 28 Blood Multi-Drug Quant Panel 1 by LC-QQQ	
C2024-0585	1	BCK	AM 28 Blood Multi-Drug Quant Panel 1 by LC-QQQ	
C2024-0591	1	BCK	AM 28 Blood Multi-Drug Quant Panel 1 by LC-QQQ	
C2024-0597	1	BCK	AM 28 Blood Multi-Drug Quant Panel 1 by LC-QQQ	
C2024-0598	1	BCK	AM 28 Blood Multi-Drug Quant Panel 1 by LC-QQQ	
C2024-0603	1	BCK	AM 28 Blood Multi-Drug Quant Panel 1 by LC-QQQ	
C2024-0620	1	BCK	AM 28 Blood Multi-Drug Quant Panel 1 by LC-QQQ	
C2024-0626	1	BCK	AM 28 Blood Multi-Drug Quant Panel 1 by LC-QQQ	
C2024-0646	1	UCK	AM 28 Urine Multi-Drug Confirmation Panel 1 by LC-	
C2024-0648	1	BCK	AM 28 Blood Multi-Drug Quant Panel 1 by LC-QQQ	

AM# 28: Multi-Drug Quantitation by LC-MS/MS

BWylie

Extraction Date: 4/5/24

Analyst: Britany Wylie

Plate lot#: 231215

Plate Retest Date: 06/15/2024

Mobile phase A: 5mM Amm Form + 0.01% FA

Mobile phase B: 0.01% Formic Acid in MeOH

Blank Blood Lot: 24C52042 (Btl 3)

Blank Urine Lot: 1324

Column: Agilent 120 EC-C18 (2.1x 100-2.7um)

LCMS-QQQ ID: 69679

Pre-Analytic:

- 1. Check levels of mobile phases and needle wash refill as needed. Ensure waste is not full.
- 2. Ensure correct column is installed and begin mobile phase flow allow to equilibrate ~ 30 minutes.

Analytic:

- 1. Remove standards, plate, controls, and samples from cold storage. Allow to reach room temperature.
- 2. **Urine Hydrolysis: In blank well, add 250µL urine, 40µL BG Turbo, and 100µL Instant Buffer I. Place on plate shaker for 5 minutes.**
- 3. Using a calibrated pipette, pipette **250µL blood and urine** (if applicable) into wells of analytical (standards) plate.
Pipette ID: P31168J
- 4. Pipette **250µL 0.5 M ammonium hydroxide** in wells of analytical plate.
- 5. Place on shaking incubator at ambient temp., 900rpm for 15 minutes.
- 6. Transfer **200-450µL of blood+base and urine+base (if applicable)** mixture to corresponding wells of SLE+ plate.
Amount transferred: 300
- 7. Apply positive pressure for approx. 10-15 seconds (or until no liquid remains on top of sorbent).
(Load at 85-100 PSI- Selector to the right).
- 8. Wait 5 minutes.
- 9. Add **900uL ethyl acetate.**
- 10. Wait 5 minutes.
- 11. Apply positive pressure for approx. 15 seconds. **(10-15 PSI- Selector to the left).**
- 12. Add **900uL ethyl acetate.**
- 13. Wait 5 minutes.
- 14. Apply positive pressure for approx. 15 seconds. **(10-15 PSI- Selector to the left).**
- 15. Remove plate containing eluate. Place on SPE Dry and evaporate to dryness at approx. 35°C. **If run contains urine or at the analyst's discretion, add 50µL 1% HCl in MeOH to wells and place plate cover on plate before drying (optional).**
- 16. Reconstitute in **100µL 20% LC MeOH** and heat seal plate with foil. Place in autosampler and run worklist.

Post-Analytic

- 1. Create batch and process data.
- 2. Make necessary changes to integration limits
- 3. Integration linear and R² values ≥0.98 for each analyte.
- 4. For unknown samples and controls: response ratio within 20% of average of controls and standards, RT within +/- 5% (tramadol RT +/-2%), S/N for primary transition >10 and secondary transitions >5.
- 5. Did all QCs pass for each analyte? Yes, see comments Add Control data to QC tracking spreadsheet.
- 6. Central File Packet to include: LIMS Worklist, Method Checklist, Calibration and Control Reports.

COMMENTS: *Compounds evaluated*

7-aminoconlanzepam	5-250 dropped cal 8 due to accuracy
amphetamine	5-100 dropped cal 6,7 and 8 due to accuracy, qualitative
Buprenorphine	0.5-50, cal 8 dropped due to accuracy
bupropion	
Citalopram	
clonazepam	
Diphenhydramine	
Fentanyl	
Fluoxetine	

BWylee

Hydroxyzine	
lamotrigine	
methamphetamine	5-250 dropped cal 7 and 8 due to accuracy
Mitragynine	
Norbuprenorphine	Qualitative only between 0.5-2.5
norfentanyl	<i>BW</i> 4-9-24
noroxycodone	
Oxazepam	
oxycodone	
Oxymorphone	
Phentermine	Not evaluated due to lowering ratios, and cal 8 due to accuracy/ratio
Quetiapine	
Temazepam	
trazodone	5-500 dropped cal 8 due to accuracy
Xylazine	
Zolpidem	

Bylee

	1	2	3	4	5	6	7	8	9	10	11	12
A	IS + Cal. 1	IS + QC_1	0585-1		0646-1							
B	IS + Cal. 2	IS + QC_2	0603-1									
C	IS + Cal. 3	IS + QC 3	0591-1		0539-1							
D	IS + Cal. 4	IS + QC_4	0620-1		0539-2							
E	IS + Cal. 5	IS + QC_2	0597-1		0539-3							
F	IS + Cal. 6	negative blood	0648-1		0539-4							
G	IS + Cal. 7	0564-1	0626-1									
H	IS + Cal. 8	0598-1	Neg urine									

blank in front

plate position 2

c2024-____-__

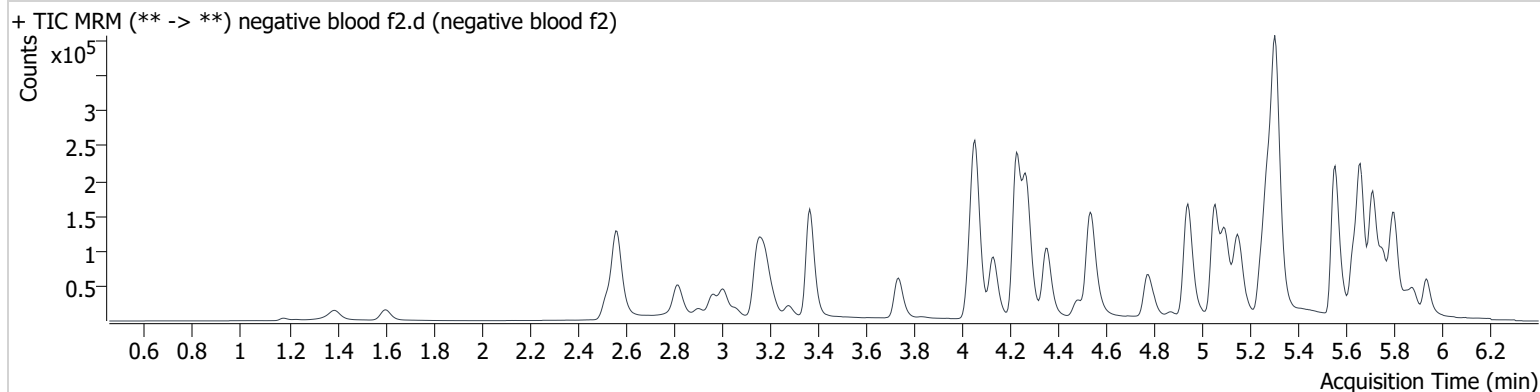
AM #28 Multi-Drug Quant. Results

BWylie

Batch results D:\MassHunter\Data\2024\am 27-28\040524\QuantResults\mdqp1 4-5-24 final.batch.bin
Calibration Last Update 4/6/2024 12:12:27 PM

Instrument	69679	Data File	negative blood f2.d
Type	Sample	Sample	negative blood f2
Acq. Method	mdqp1 121523.m	Operator	Britany Wylie
Sample Position	P2-F2	Comment	
Injection Volume	2		
Acq. Date-Time	4/5/2024 3:40:54 PM		
Sample Info.			

Sample Chromatogram



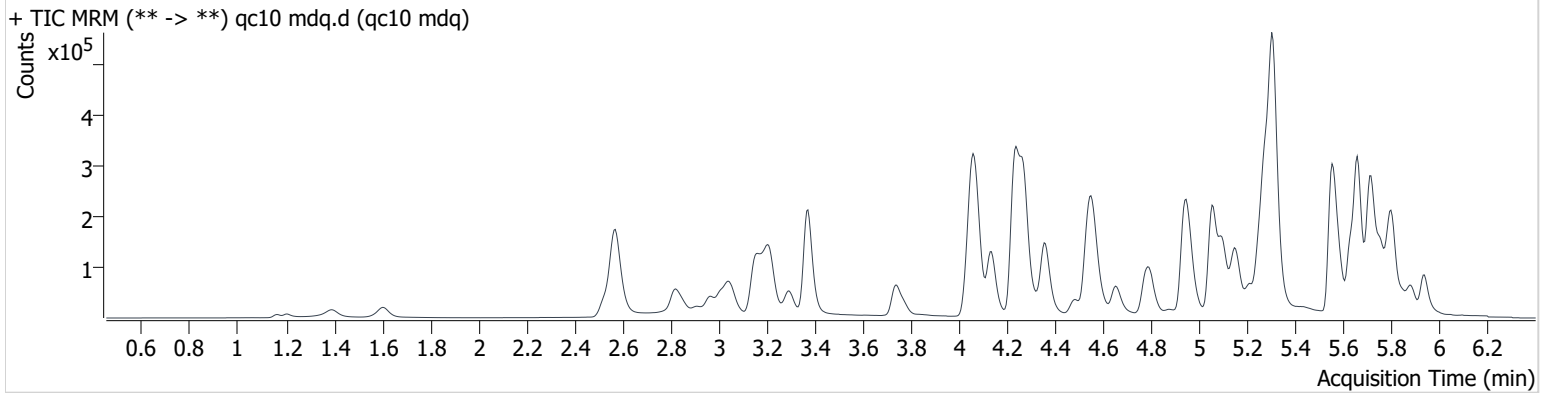
AM #28 Multi-Drug Quant. Results

Bylye

Batch results D:\MassHunter\Data\2024\am 27-28\040524\QuantResults\mdqp1 4-5-24 final.batch.bin
Calibration Last Update 4/9/2024 10:30:12 AM

Instrument	69679	Data File	qc10 mdq.d
Type	QC	Sample	qc10 mdq
Acq. Method	mdqp1 121523.m	Operator	Britany Wylie
Sample Position	P2-A2	Comment	
Injection Volume	2		
Acq. Date-Time	4/5/2024 2:57:28 PM		

Sample Chromatogram



Name	RT	Resp.	S/N	Ratio	S/N	ISTD Resp.	Final Conc.
7-aminoclonazepam	4.258	11988	1286.7	118.32	2258.8	72714	9.902 ng/ml
Amphetamine	3.048	32282	2611.4	287.98	2563.4	106699	9.817 ng/ml
Buprenorphine	5.875	4328	823.8	17.62	789.7	62549	1.002 ng/ml
Bupropion	4.799	66071	6338.8	77.91	2436.2	198246	9.283 ng/ml
Citalopram	5.256	57825	1629.1	33.75	69198.8	254088	9.414 ng/ml
Clonazepam	5.602	7969	1251.0	37.28	2101.6	16662	9.387 ng/ml
Diphenhydramine	5.311	167941	18345.0	33.86	1257.9	928324	8.058 ng/ml
Fentanyl	5.116	6745	11086.5	140.51	1058.6	310780	0.906 ng/ml
Fluoxetine	5.717	79606	6346.1	6.14	5975.3	300265	9.670 ng/ml
Hydroxyzine	5.720	66307	5413.1	106.10	4839.5	928324	9.794 ng/ml
Lamotrigine	4.311	4206	43.3	108.13	2246.6	86930	9.452 ng/ml
Methamphetamine	3.217	123994	7311.2	34.73	5941.1	278770	10.443 ng/ml
Mitragynine	5.255	22970	12590.4	26.07	8398.5	28531	9.628 ng/ml
Morphine	1.166	2422	225.4	19.95	62.2	3487	9.349 ng/ml
Norbuprenorphine	5.017	692	122132430069	116.79	4701.4	10674	0.816 ng/ml
			39.1				
Norfentanyl	4.082	3844	904.9	30.10	4486.6	455715	0.949 ng/ml
Noroxycodone	2.932	11361	1898.5	56.95	∞	43658	9.617 ng/ml
Oxazepam	5.749	8851	1613.7	70.60	310.1	41936	10.464 ng/ml
Oxycodone	2.849	36811	∞	29.81	888.9	162031	10.389 ng/ml
Oxymorphone	1.395	13585	∞	46.65	∞	62514	9.350 ng/ml
Phentermine	3.776	17568	564.9	11.77	4219.6	166137	10.476 ng/ml
Quetiapine	5.579	85589	41576.8	64.20	27696.7	123556	9.891 ng/ml
Temazepam	5.811	38662	2001.2	30.89	667.3	156234	9.992 ng/ml
Trazodone	5.208	61915	8510.8	124.05	984.5	336601	9.931 ng/ml
Xylazine	4.072	7494	128.6	126.85	285.3	165348	9.962 ng/ml
Zolpidem	4.967	124469	2967.3	29.17	257349.6	510159	9.875 ng/ml

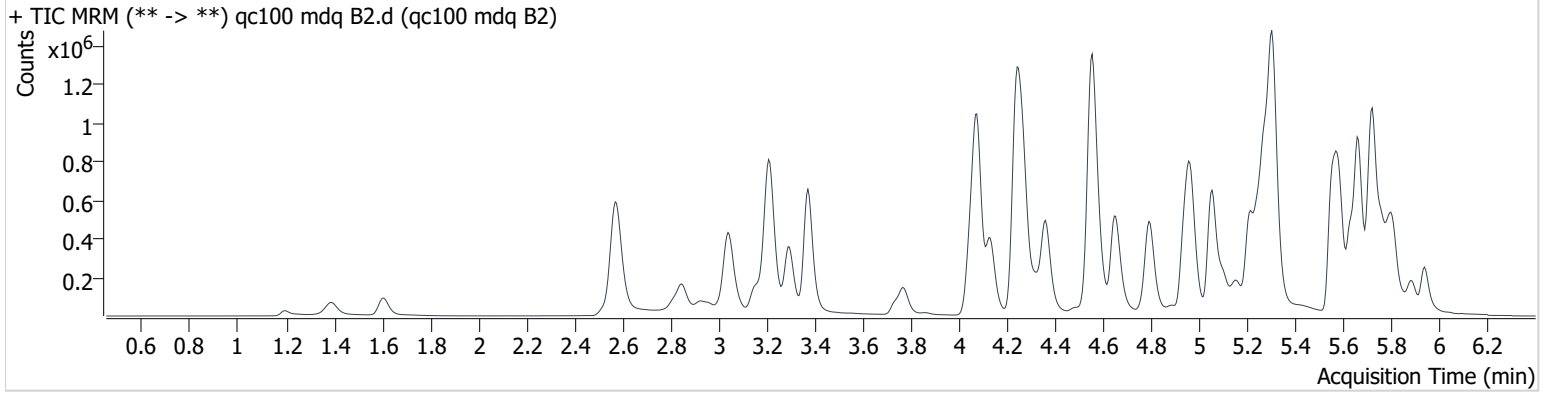
AM #28 Multi-Drug Quant. Results

Wylie

Batch results D:\MassHunter\Data\2024\am 27-28\040524\QuantResults\mdqp1 4-5-24 final.batch.bin
Calibration Last Update 4/9/2024 10:30:12 AM

Instrument	69679	Data File	qc100 mdq B2.d
Type	Sample	Sample	qc100 mdq B2
Acq. Method	mdqp1 121523.m	Operator	Britany Wylie
Sample Position	P2-B2	Comment	
Injection Volume	2		
Acq. Date-Time	4/5/2024 7:00:57 PM		

Sample Chromatogram



Name	RT	Resp.	S/N	Ratio	S/N	ISTD Resp.	Final Conc.
7-aminoclonazepam	4.253	100621	38742.9	110.51	3716.3	61177	103.705 ng/ml
Amphetamine	3.048	270243	19411.0	277.57	∞	109647	90.133 ng/ml
Buprenorphine	5.880	43045	132989.0	16.66	6897.4	63921	9.297 ng/ml
Bupropion	4.794	690114	31733.7	73.08	6600.1	205932	96.642 ng/ml
Citalopram	5.251	518408	224878.8	37.90	789608.9	230155	95.003 ng/ml
Clonazepam	5.602	69238	2448.2	36.37	4770.3	12404	103.078 ng/ml
Diphenhydramine	5.311	1615845	1407832.2	34.01	1622640.7	889995	79.395 ng/ml
Fentanyl	5.111	71923	24101.2	130.90	13366.2	313798	9.352 ng/ml
Fluoxetine	5.717	670150	∞	6.42	67686.3	262970	95.674 ng/ml
Hydroxyzine	5.725	602051	119384.6	104.51	79374.5	889995	96.567 ng/ml
Lamotrigine	4.306	40617	1317.5	99.58	693.4	74995	93.250 ng/ml
Methamphetamine	3.217	1018195	49383.5	36.29	18957.7	300012	98.193 ng/ml
Mitragynine	5.249	207200	921682.8	30.51	145738.9	24576	88.240 ng/ml
Morphine	1.196	26724	3117.5	19.31	864.7	3648	97.366 ng/ml
Norbuprenorphine	5.007	5959	7684.9	97.99	26438.6	10596	9.385 ng/ml
Norfentanyl	4.082	32444	7022.2	29.98	39577.4	377153	9.031 ng/ml
Noroxycodone	2.927	115992	∞	52.29	∞	43757	99.661 ng/ml
Oxazepam	5.744	46447	3327.6	71.39	1865.1	23767	96.172 ng/ml
Oxycodone	2.844	353192	∞	29.46	∞	168197	98.990 ng/ml
Oxymorphone	1.390	166143	∞	43.86	∞	74693	92.683 ng/ml
Phentermine	3.771	159518	4058.6	10.45	9781.8	173763	96.212 ng/ml
Quetiapine	5.579	825259	240608.8	66.81	81760.0	113762	97.109 ng/ml
Temazepam	5.811	250463	19740.8	29.33	2302.7	99755	101.749 ng/ml
Trazodone	5.213	639386	238517.1	126.89	5018.1	351228	102.718 ng/ml
Xylazine	4.067	71650	1282.5	131.59	2053.3	168320	99.218 ng/ml
Zolpidem	4.967	1222435	111497.5	30.36	∞	503367	98.391 ng/ml

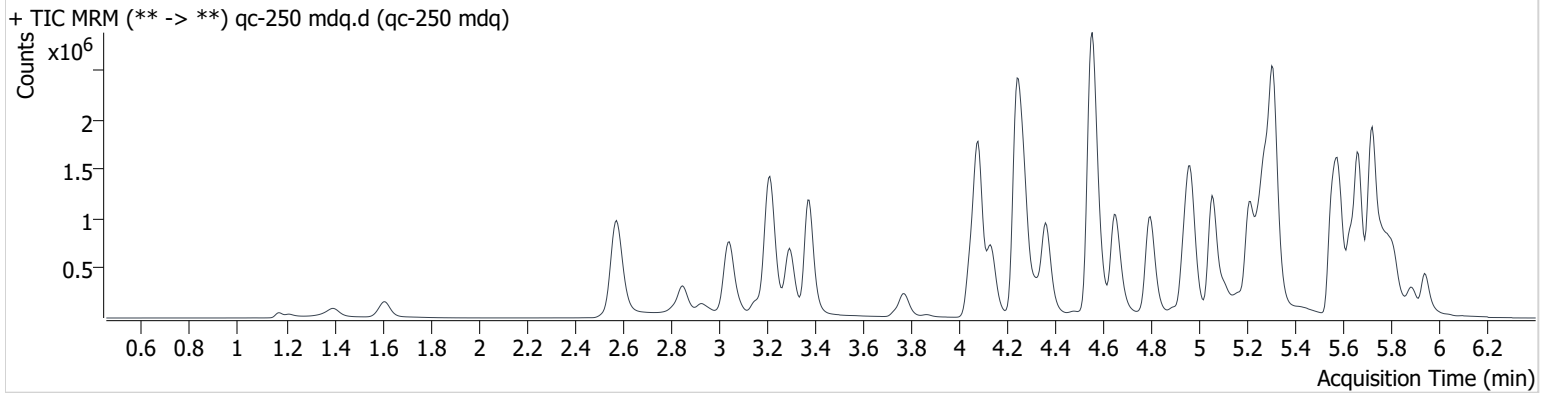
AM #28 Multi-Drug Quant. Results

Wylie

Batch results D:\MassHunter\Data\2024\am 27-28\040524\QuantResults\mdqp1 4-5-24 final.batch.bin
Calibration Last Update 4/9/2024 10:30:12 AM

Instrument	69679	Data File	qc-250 mdq.d
Type	QC	Sample	qc-250 mdq
Acq. Method	mdqp1 121523.m	Operator	Britany Wylie
Sample Position	P2-C2	Comment	
Injection Volume	2		
Acq. Date-Time	4/5/2024 3:06:09 PM		

Sample Chromatogram



Name	RT	Resp.	S/N	Ratio	S/N	ISTD Resp.	Final Conc.
7-aminoclonazepam	4.258	175510	15653.1	109.13	72511.0	45746	242.635 ng/ml
Amphetamine	3.048	498608	170253.5	268.46	∞	95993	191.527 ng/ml
Buprenorphine	5.875	102495	240771.8	14.96	27530.9	59773	23.591 ng/ml
Bupropion	4.799	1594397	652369.4	73.06	141354.8	198098	232.616 ng/ml
Citalopram	5.251	985246	94641.6	40.54	∞	178747	232.781 ng/ml
Clonazepam	5.607	133972	∞	35.69	47639.6	9939	248.050 ng/ml
Diphenhydramine	5.311	3503701	278533.9	33.69	104066.7	751312	203.675 ng/ml
Fentanyl	5.111	176459	25050.2	128.26	10276.7	297410	24.173 ng/ml
Fluoxetine	5.717	1285597	28321.7	6.38	438445.6	202605	238.693 ng/ml
Hydroxyzine	5.720	1259484	137699.5	103.98	218951.5	751312	239.973 ng/ml
Lamotrigine	4.306	74863	354.1	99.87	166.7	51781	246.865 ng/ml
Methamphetamine	3.217	1945734	158380.9	39.17	9257.6	281483	202.889 ng/ml
Mitragynine	5.255	413891	125703.9	31.50	135208.5	18891	227.192 ng/ml
Morphine	1.171	59351	6263.1	18.32	1801.5	3063	257.310 ng/ml
Norbuprenorphine	5.012	13599	33180.5	102.17	17366.3	9916	23.318 ng/ml
Norfentanyl	4.087	58343	5614.1	29.57	28149.4	259257	23.512 ng/ml
Noroxycodone	2.932	245437	∞	52.73	6117.4	35914	257.226 ng/ml
Oxazepam	5.744	70382	13113.1	69.69	7372.2	13839	250.132 ng/ml
Oxycodone	2.849	777065	∞	29.61	∞	151154	242.866 ng/ml
Oxymorphone	1.395	331333	∞	44.17	∞	59285	232.378 ng/ml
Phentermine	3.776	317474	2980.0	9.92	2006.9	157239	212.426 ng/ml
Quetiapine	5.579	1648597	612209.1	67.06	344077.7	96748	227.186 ng/ml
Temazepam	5.816	369815	241052.5	30.87	5496.9	56561	265.033 ng/ml
Trazodone	5.208	1364434	262609.6	134.28	408011.7	341633	225.950 ng/ml
Xylazine	4.067	151760	1072.3	133.13	4391.7	148497	239.147 ng/ml
Zolpidem	4.967	2595644	256507.4	30.65	∞	438242	239.980 ng/ml

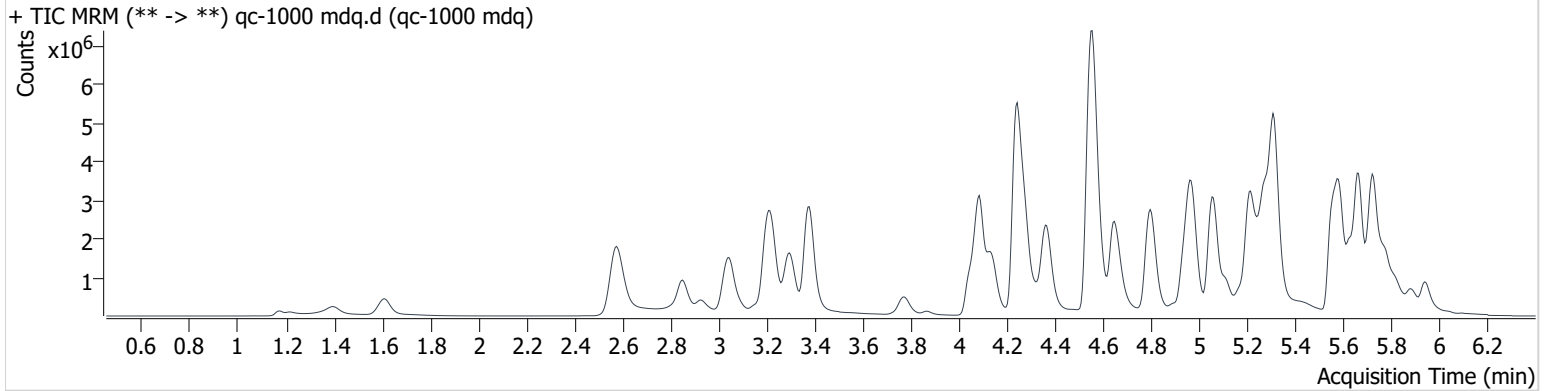
AM #28 Multi-Drug Quant. Results

Wylie

Batch results D:\MassHunter\Data\2024\am 27-28\040524\QuantResults\mdqp1 4-5-24 final.batch.bin
Calibration Last Update 4/9/2024 10:30:12 AM

Instrument	69679	Data File	qc-1000 mdq.d
Type	QC	Sample	qc-1000 mdq
Acq. Method	mdqp1 121523.m	Operator	Britany Wylie
Sample Position	P2-D2	Comment	
Injection Volume	2		
Acq. Date-Time	4/5/2024 3:14:49 PM		

Sample Chromatogram



Name	RT	Resp.	S/N	Ratio	S/N	ISTD Resp.	Final Conc.
7-aminoclonazepam	4.258	217755	45477.5	111.04	22192.1	21026	655.894 ng/ml
Amphetamine	3.053	1011088	109458.1	260.54	∞	80108	467.430 ng/ml
Buprenorphine	5.875	310950	6395161.3	15.56	103287.8	55611	76.808 ng/ml
Bupropion	4.799	4916714	816669.0	68.50	573433.5	170459	834.584 ng/ml
Citalopram	5.251	1963190	1837972.2	40.30	2792446.9	90755	914.148 ng/ml
Clonazepam	5.607	259164	70640.8	33.71	611609.4	5154	923.718 ng/ml
Diphenhydramine	5.316	9180419	2181447.1	29.35	177364.2	449922	890.608 ng/ml
Fentanyl	5.116	671335	158619.0	136.02	242198.3	268172	101.918 ng/ml
Fluoxetine	5.717	2303234	165558.5	6.56	204552.2	100702	861.196 ng/ml
Hydroxyzine	5.725	2637090	560008.7	110.33	227238.5	449922	840.153 ng/ml
Lamotrigine	4.306	140801	4446.2	96.56	273.9	25605	935.504 ng/ml
Methamphetamine	3.217	4864119	∞	35.72	∞	279001	515.962 ng/ml
Mitragynine	5.249	1048876	28689.0	33.77	252473.2	12587	860.336 ng/ml
Morphine	1.171	180684	13943.8	19.68	4084.8	2287	1048.803 ng/ml
Norbuprenorphine	5.017	41333	109113.0	100.65	30598.4	7216	98.354 ng/ml
Norfentanyl	4.093	92659	15966.8	28.86	∞	84182	114.727 ng/ml
Noroxycodone	2.927	744430	∞	48.96	3062.8	30014	934.032 ng/ml
Oxazepam	5.749	149554	36781.1	70.42	76770.0	7427	990.157 ng/ml
Oxycodone	2.849	2496286	∞	29.07	25941.7	132532	890.781 ng/ml
Oxymorphone	1.395	1020947	∞	43.82	∞	47054	901.209 ng/ml
Phentermine	3.776	782027	967.5	9.11 Low	∞	140556	586.578 ng/ml
Quetiapine	5.584	4107600	2093519.9	61.71	84989.5	52819	1034.377 ng/ml
Temazepam	5.816	550169	336881.3	33.18	12593.6	24741	901.463 ng/ml
Trazodone	5.208	3611098	469460.2	140.26	1728109.7	332327	615.600 ng/ml
Xylazine	4.067	404251	16356.1	134.95	31791.4	108900	870.433 ng/ml
Zolpidem	4.967	7161397	401062.1	30.88	517385.6	328217	884.086 ng/ml

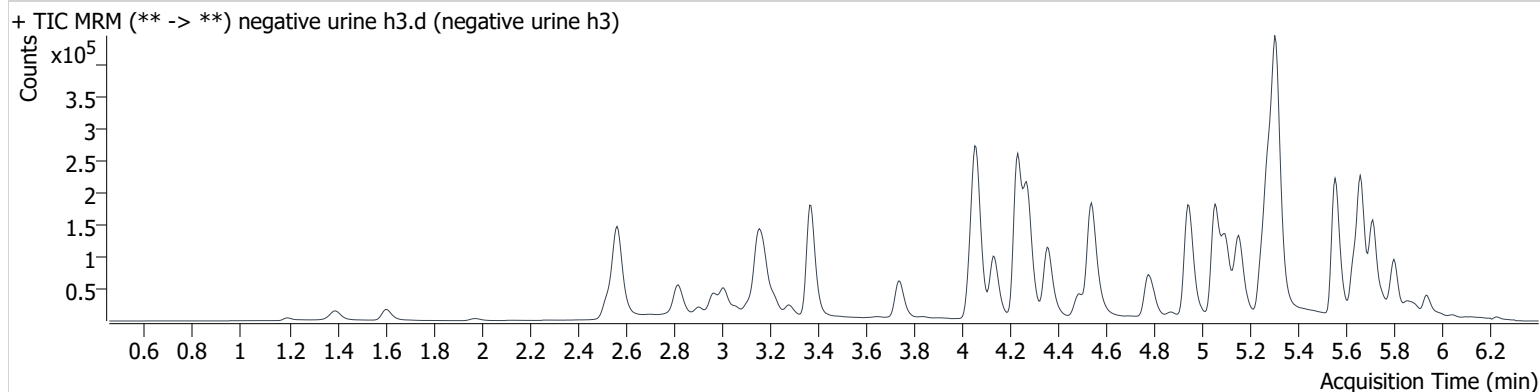
AM #28 Multi-Drug Quant. Results

BWylie

Batch results D:\MassHunter\Data\2024\am 27-28\040524\QuantResults\mdqp1 4-5-24 final.batch.bin
Calibration Last Update 4/9/2024 10:30:12 AM

Instrument	69679	Data File	negative urine h3.d
Type	Sample	Sample	negative urine h3
Acq. Method	mdqp1 121523.m	Operator	Britany Wylie
Sample Position	P2-H3	Comment	
Injection Volume	2		
Acq. Date-Time	4/5/2024 5:16:29 PM		
Sample Info.			

Sample Chromatogram



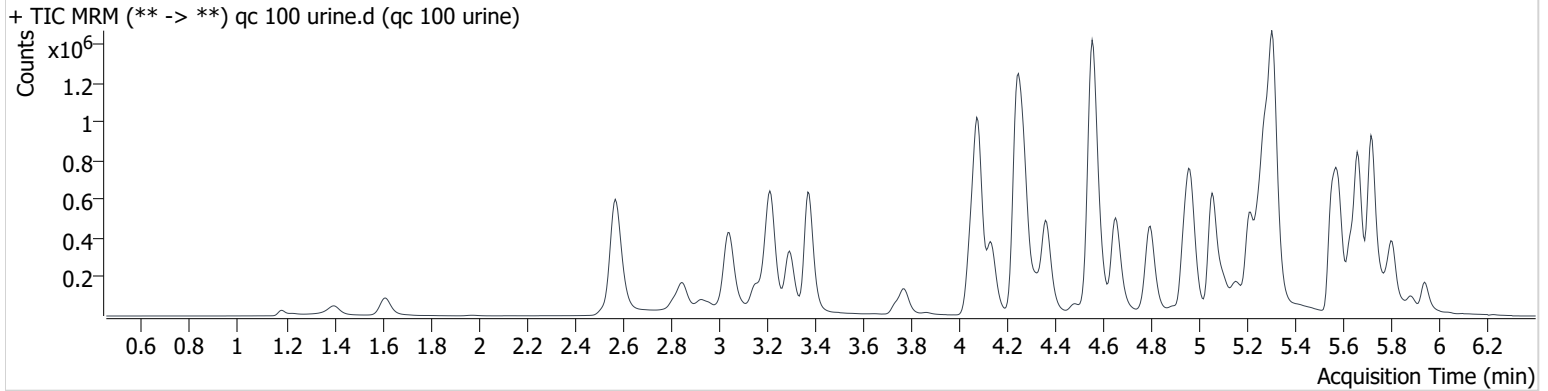
AM #28 Multi-Drug Quant. Results

Wylie

Batch results D:\MassHunter\Data\2024\am 27-28\040524\QuantResults\mdqp1 4-5-24 final.batch.bin
Calibration Last Update 4/9/2024 10:30:12 AM

Instrument	69679	Data File	qc 100 urine.d
Type	Sample	Sample	qc 100 urine
Acq. Method	mdqp1 121523.m	Operator	Britany Wylie
Sample Position	P2-E2	Comment	
Injection Volume	2		
Acq. Date-Time	4/5/2024 3:32:13 PM		
Sample Info.			

Sample Chromatogram



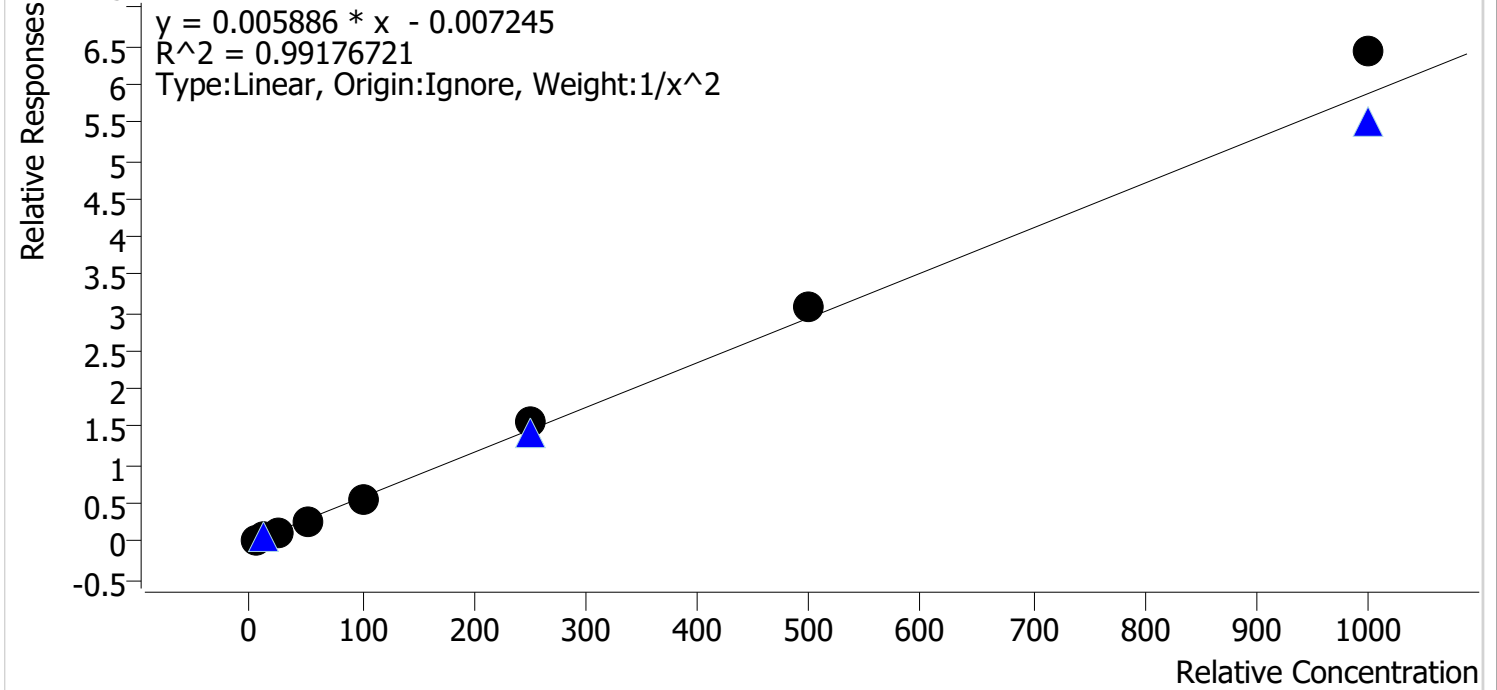
Name	RT	Resp.	S/N	Ratio	S/N	ISTD Resp.	Final Conc.
7-aminoclonazepam	4.258	97773	6639.1	113.12	13508.5	58226	105.889 ng/ml
Amphetamine	3.048	273503	81321.3	266.31	45871.3	110190	90.781 ng/ml
Buprenorphine	5.880	29665	∞	14.86	3307.0	38766	10.557 ng/ml
Bupropion	4.799	638697	23498.8	74.77	13034.1	204818	89.903 ng/ml
Citalopram	5.251	489978	71930.6	38.26	∞	223374	92.513 ng/ml
Clonazepam	5.602	25150	14746.0	35.82	338.4	4391	105.744 ng/ml
Diphenhydramine	5.311	1607821	117199.9	33.08	29031.0	842202	83.475 ng/ml
Fentanyl	5.116	64509	14893.6	131.05	15074.6	277331	9.490 ng/ml
Fluoxetine	5.717	546982	13101.9	6.06	∞	219486	93.554 ng/ml
Hydroxyzine	5.720	487117	∞	106.31	12520.7	842202	82.501 ng/ml
Lamotrigine	4.311	37398	691.6	100.63	428.7	56532	113.627 ng/ml
Methamphetamine	3.222	798887	∞	38.57	307135.2	284977	80.622 ng/ml
Mitragynine	5.255	244771	32604.5	30.06	335355.4	25557	100.061 ng/ml
Morphine	1.181	24973	5144.4	21.14	1052.1	3879	85.580 ng/ml
Norbuprenorphine	5.012	5445	8425.4	100.36	∞	9347	9.732 ng/ml
Norfentanyl	4.087	31587	3574.0	29.79	125214.2	361429	9.174 ng/ml
Noroxycodone	2.927	122939	∞	52.83	1551.3	47567	97.165 ng/ml
Oxazepam	5.744	15412	2372.7	61.69	964.2	8122	93.379 ng/ml
Oxycodone	2.849	366622	∞	29.46	∞	172405	100.250 ng/ml
Oxymorphone	1.400	111405	∞	46.46	∞	61131	75.994 ng/ml
Phentermine	3.776	149607	9787.7	10.45	833.5	155846	100.640 ng/ml
Quetiapine	5.579	738731	106682.9	63.34	248075.3	106816	92.611 ng/ml
Temazepam	5.811	180484	∞	34.86	∞	83750	87.327 ng/ml
Trazodone	5.208	615363	11483.7	127.94	∞	334719	103.740 ng/ml
Xylazine	4.072	70279	673.2	133.12	2429.6	160178	102.286 ng/ml
Zolpidem	4.967	1158847	107655.9	29.78	13963.8	467986	100.325 ng/ml

Compound Calibration Report



Batch results D:\MassHunter\Data\2024\am 27-28\040524\QuantResults\mdqp1 4-5-24 final.batch.t
Last Cal. Update 4/6/2024 12:12 PM
Analyst Name ISP\datastor
Analyte Lamotrigine **Internal Standard** Carisoprodol-D7

Lamotrigine - 8 Levels, 8 Levels Used, 8 Points, 8 Points Used, 3 QCs

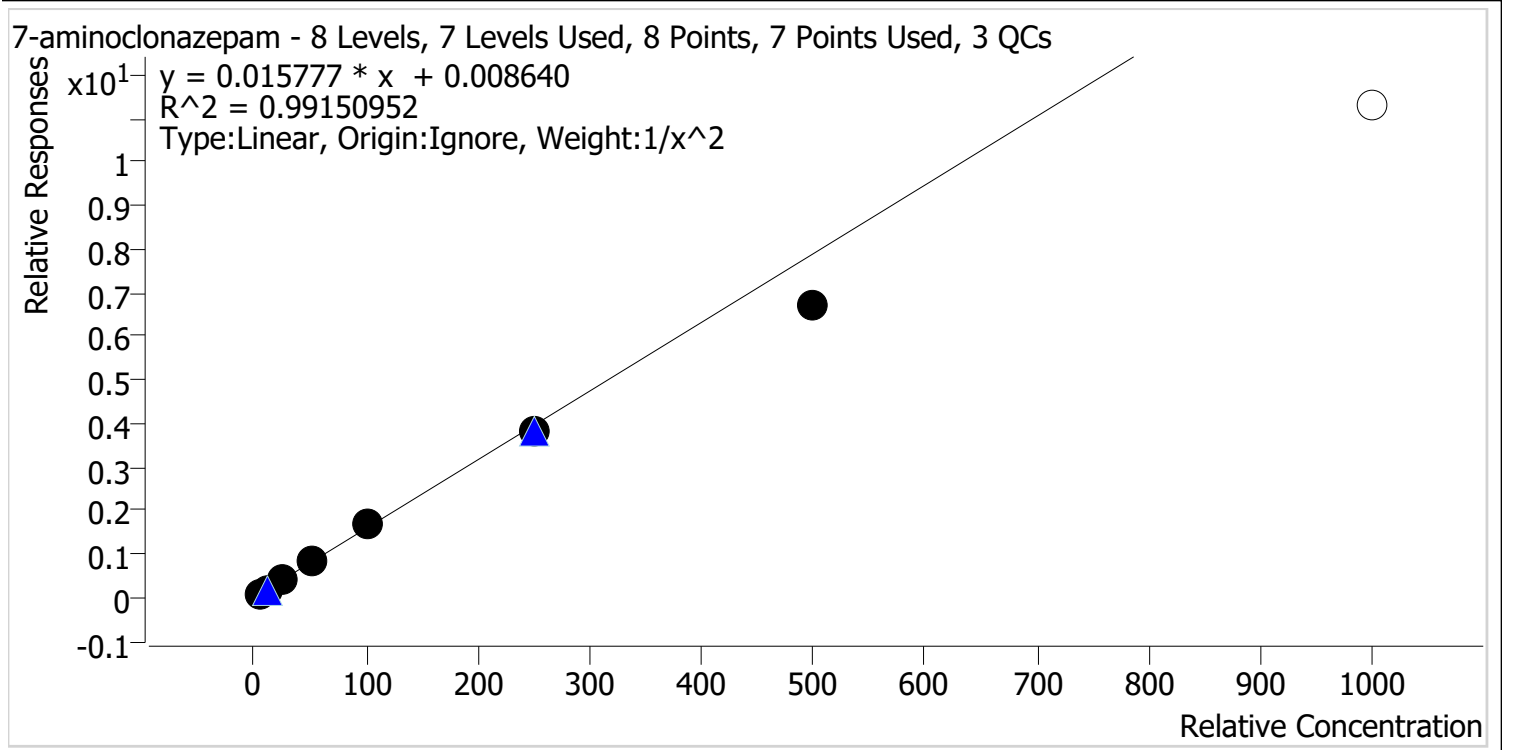


Sample	Level	Enabled	Expected Concentration	Final Concentration	Accuracy
cal 1 mdq	1	✓	5.0	5.2	104.5
cal 2 mdq	2	✓	10.0	9.7	97.4
cal 3 mdq	3	✓	25.0	21.9	87.8
cal 4 mdq	4	✓	50.0	46.0	92.0
cal 5 mdq	5	✓	100.0	96.0	96.0
cal 6 mdq	6	✓	250.0	271.5	108.6
cal 7 mdq	7	✓	500.0	522.1	104.4
cal 8 mdq	8	✓	1000.0	1093.5	109.4

Compound Calibration Report



Batch results D:\MassHunter\Data\2024\am 27-28\040524\QuantResults\mdqp1 4-5-24 final.batch.k
Last Cal. Update 4/6/2024 12:12 PM
Analyst Name ISP\datastor
Analyte 7-aminoclonazepam **Internal Standard** 7-Aminoclonazepam-D4

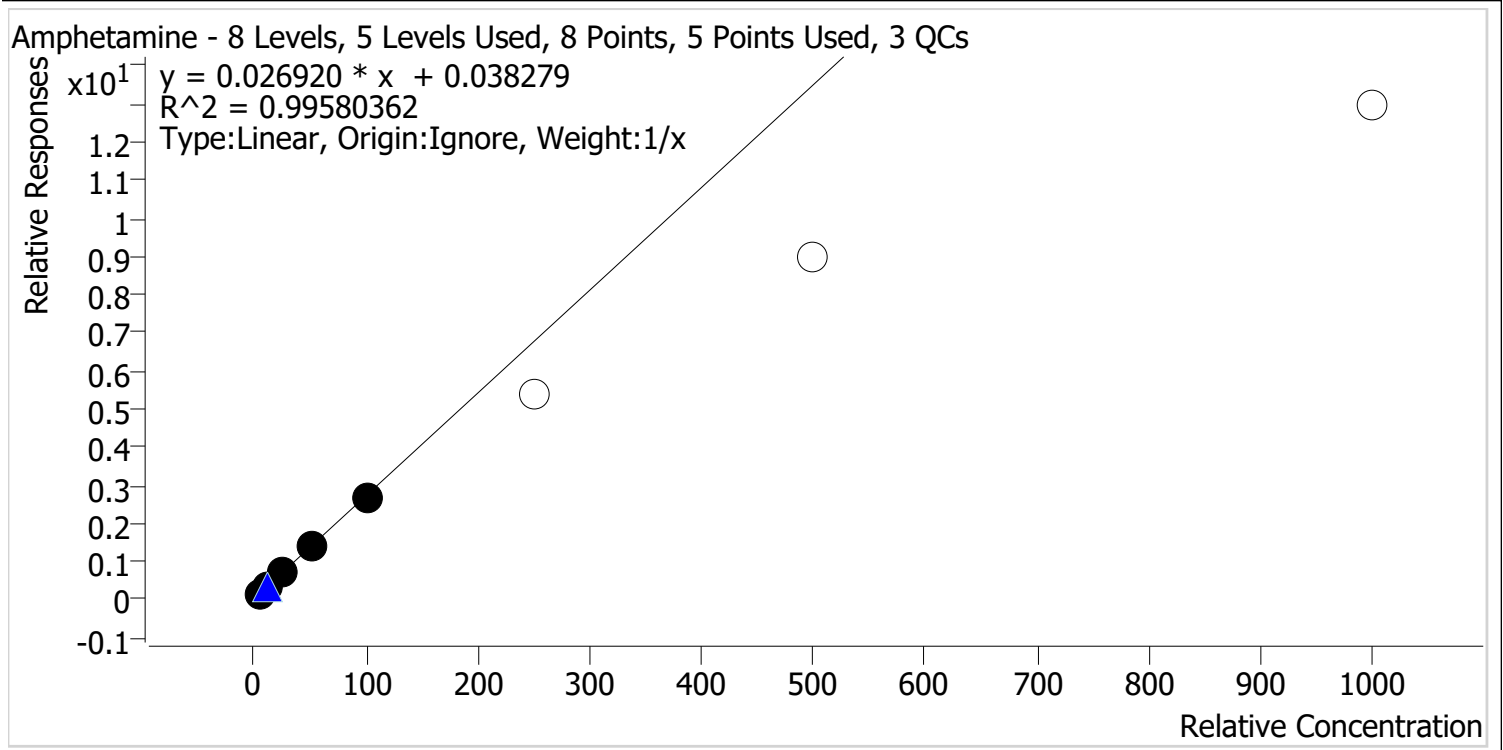


Sample	Level	Enabled	Expected Concentration	Final Concentration	Accuracy
cal 1 mdq	1	✓	5.0	4.9	97.9
cal 2 mdq	2	✓	10.0	10.0	100.2
cal 3 mdq	3	✓	25.0	26.4	105.6
cal 4 mdq	4	✓	50.0	53.6	107.1
cal 5 mdq	5	✓	100.0	106.7	106.7
cal 6 mdq	6	✓	250.0	243.7	97.5
cal 7 mdq	7	✓	500.0	424.4	84.9
cal 8 mdq	8	✗	1000.0	715.6	71.6

Compound Calibration Report



Batch results D:\MassHunter\Data\2024\am 27-28\040524\QuantResults\mdqp1 4-5-24 final.batch.t
Last Cal. Update 4/6/2024 12:12 PM
Analyst Name ISP\datastor
Analyte Amphetamine **Internal Standard** Amphetamine-D11



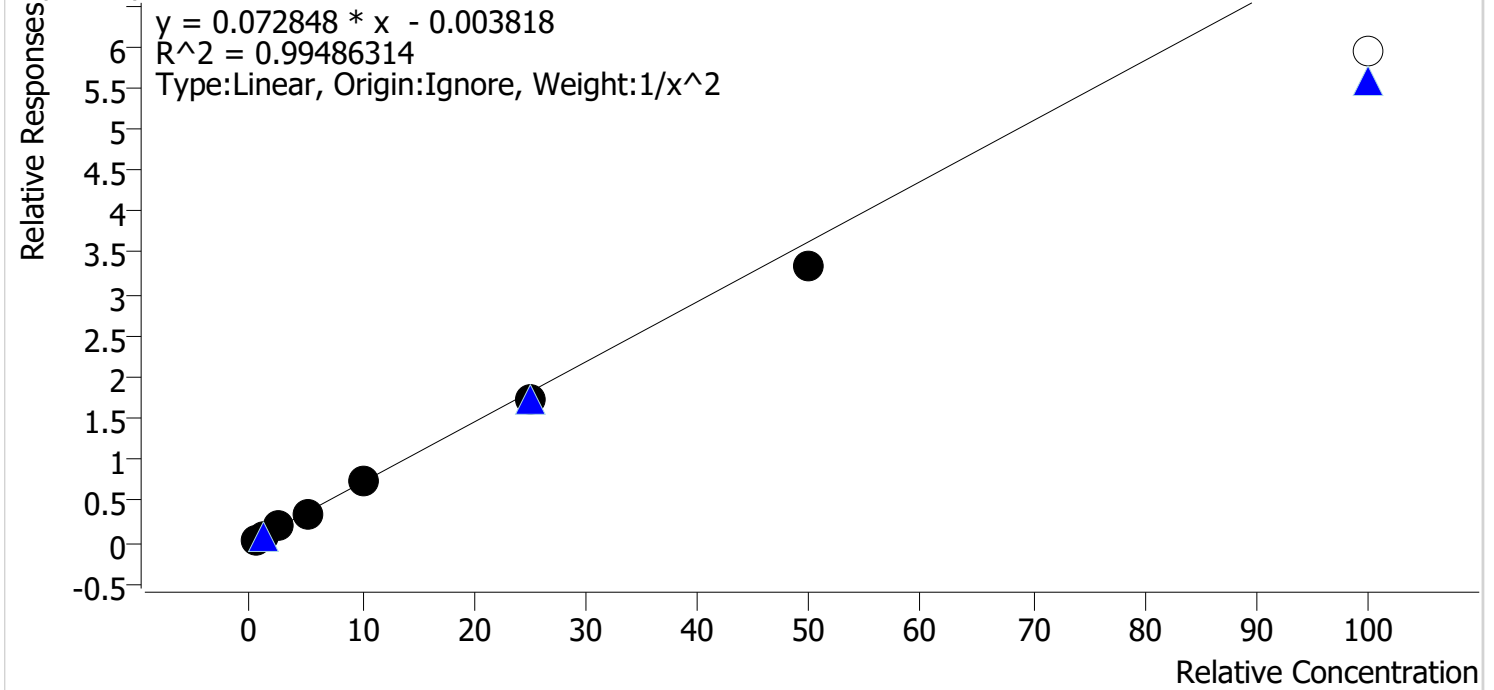
Sample	Level	Enabled	Expected Concentration	Final Concentration	Accuracy
cal 1 mdq	1	✓	5.0	4.4	88.7
cal 2 mdq	2	✓	10.0	10.2	102.3
cal 3 mdq	3	✓	25.0	27.2	108.7
cal 4 mdq	4	✓	50.0	52.2	104.4
cal 5 mdq	5	✓	100.0	96.0	96.0
cal 6 mdq	6	✗	250.0	197.8	79.1
cal 7 mdq	7	✗	500.0	332.0	66.4
cal 8 mdq	8	✗	1000.0	479.7	48.0

Compound Calibration Report



Batch results D:\MassHunter\Data\2024\am 27-28\040524\QuantResults\mdqp1 4-5-24 final.batch.t
Last Cal. Update 4/6/2024 12:12 PM
Analyst Name ISP\datastor
Analyte Buprenorphine **Internal Standard** Buprenorphine-D4

Buprenorphine - 8 Levels, 7 Levels Used, 8 Points, 7 Points Used, 3 QCs



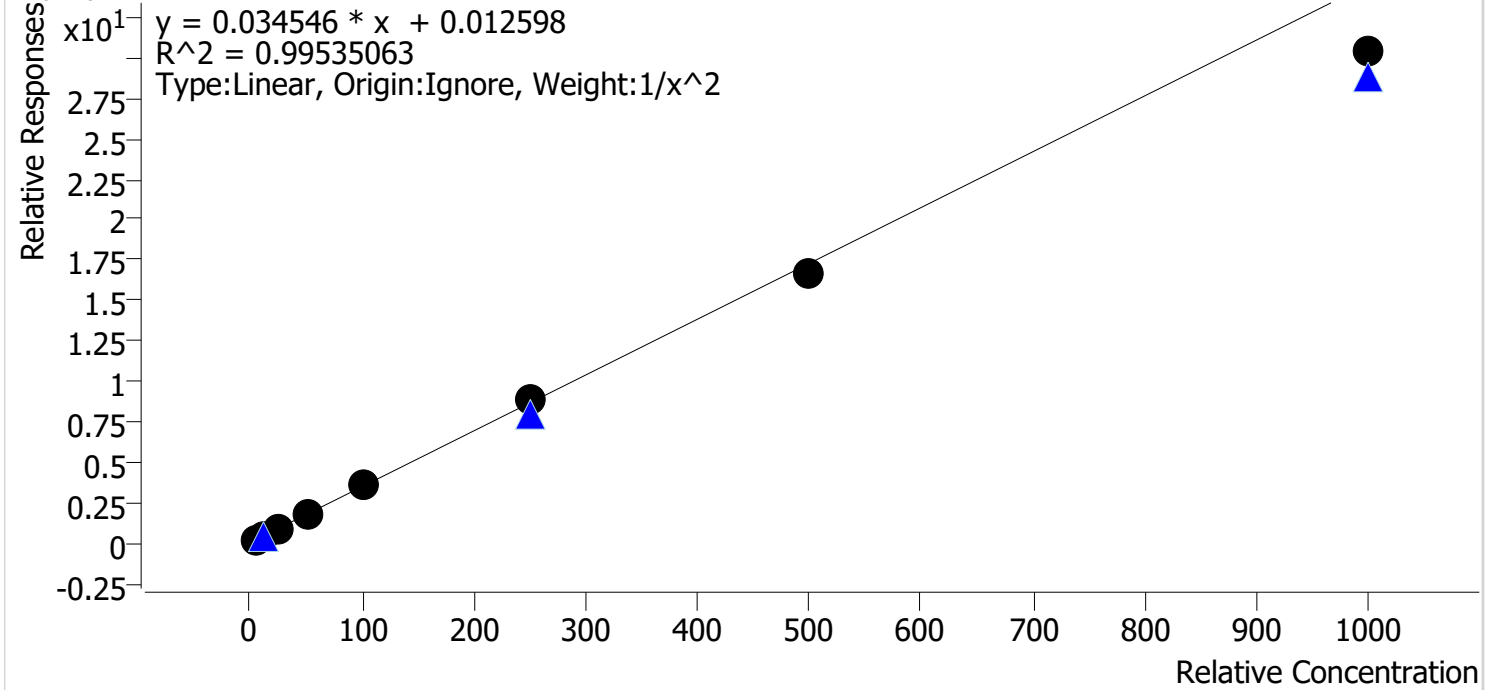
Sample	Level	Enabled	Expected Concentration	Final Concentration	Accuracy
cal 1 mdq	1	✓	0.5	0.5	96.6
cal 2 mdq	2	✓	1.0	1.0	103.2
cal 3 mdq	3	✓	2.5	2.7	109.3
cal 4 mdq	4	✓	5.0	4.9	98.7
cal 5 mdq	5	✓	10.0	10.5	105.1
cal 6 mdq	6	✓	25.0	23.7	94.7
cal 7 mdq	7	✓	50.0	46.2	92.4
cal 8 mdq	8	x	100.0	81.5	81.5

Compound Calibration Report



Batch results D:\MassHunter\Data\2024\am 27-28\040524\QuantResults\mdqp1 4-5-24 final.batch.t
Last Cal. Update 4/6/2024 12:12 PM
Analyst Name ISP\datastor
Analyte Bupropion **Internal Standard** Bupropion-D9

Bupropion - 8 Levels, 8 Levels Used, 8 Points, 8 Points Used, 3 QCs



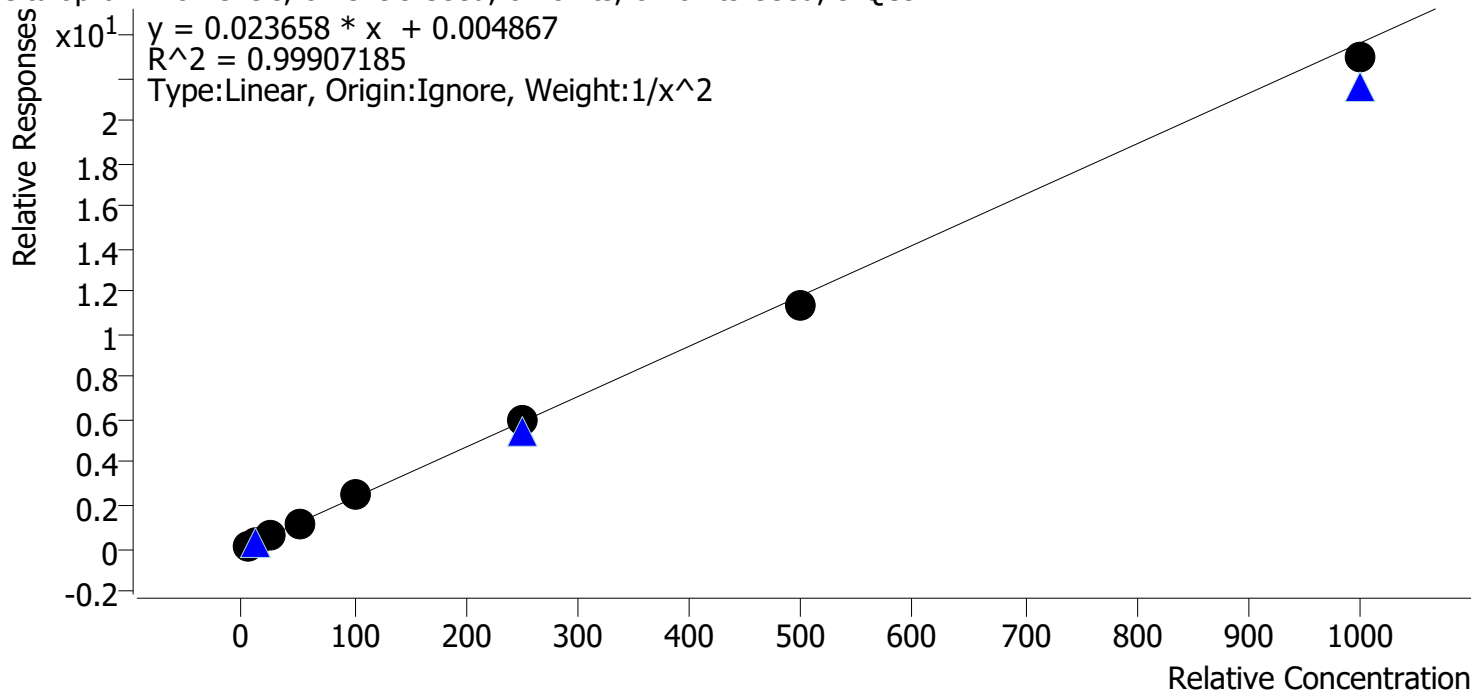
Sample	Level	Enabled	Expected Concentration	Final Concentration	Accuracy
cal 1 mdq	1	✓	5.0	4.8	96.8
cal 2 mdq	2	✓	10.0	10.3	103.1
cal 3 mdq	3	✓	25.0	26.4	105.6
cal 4 mdq	4	✓	50.0	52.0	104.0
cal 5 mdq	5	✓	100.0	104.4	104.4
cal 6 mdq	6	✓	250.0	254.2	101.7
cal 7 mdq	7	✓	500.0	482.7	96.5
cal 8 mdq	8	✓	1000.0	879.4	87.9

Compound Calibration Report



Batch results D:\MassHunter\Data\2024\am 27-28\040524\QuantResults\mdqp1 4-5-24 final.batch.t
Last Cal. Update 4/6/2024 12:12 PM
Analyst Name ISP\datastor
Analyte Citalopram **Internal Standard** Citalopram-D6

Citalopram - 8 Levels, 8 Levels Used, 8 Points, 8 Points Used, 3 QCs



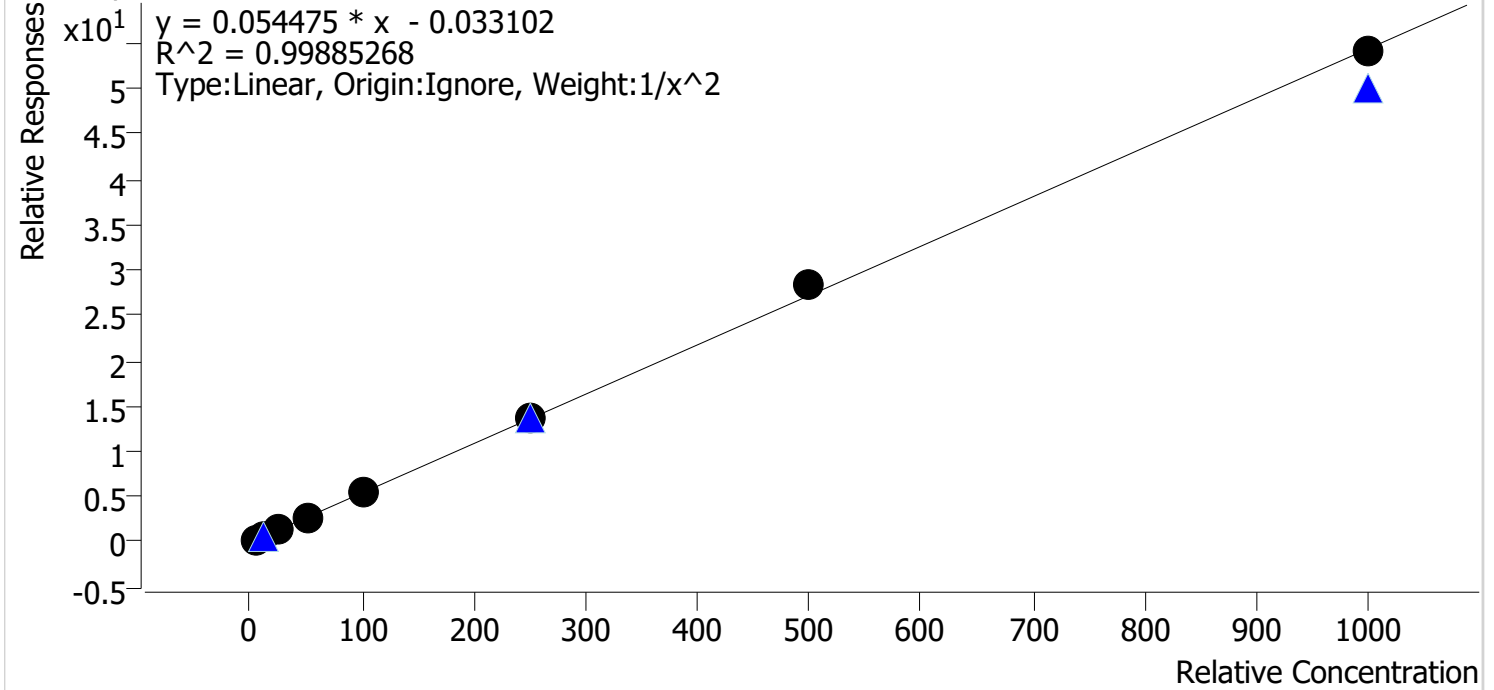
Sample	Level	Enabled	Expected Concentration	Final Concentration	Accuracy
cal 1 mdq	1	✓	5.0	4.9	98.4
cal 2 mdq	2	✓	10.0	10.2	101.8
cal 3 mdq	3	✓	25.0	25.5	102.0
cal 4 mdq	4	✓	50.0	51.0	101.9
cal 5 mdq	5	✓	100.0	102.9	102.9
cal 6 mdq	6	✓	250.0	250.4	100.2
cal 7 mdq	7	✓	500.0	478.4	95.7
cal 8 mdq	8	✓	1000.0	971.0	97.1

Compound Calibration Report



Batch results D:\MassHunter\Data\2024\am 27-28\040524\QuantResults\mdqp1 4-5-24 final.batch.k
Last Cal. Update 4/6/2024 12:12 PM
Analyst Name ISP\datastor
Analyte Clonazepam **Internal Standard** Clonazepam-D4

Clonazepam - 8 Levels, 8 Levels Used, 8 Points, 8 Points Used, 3 QCs



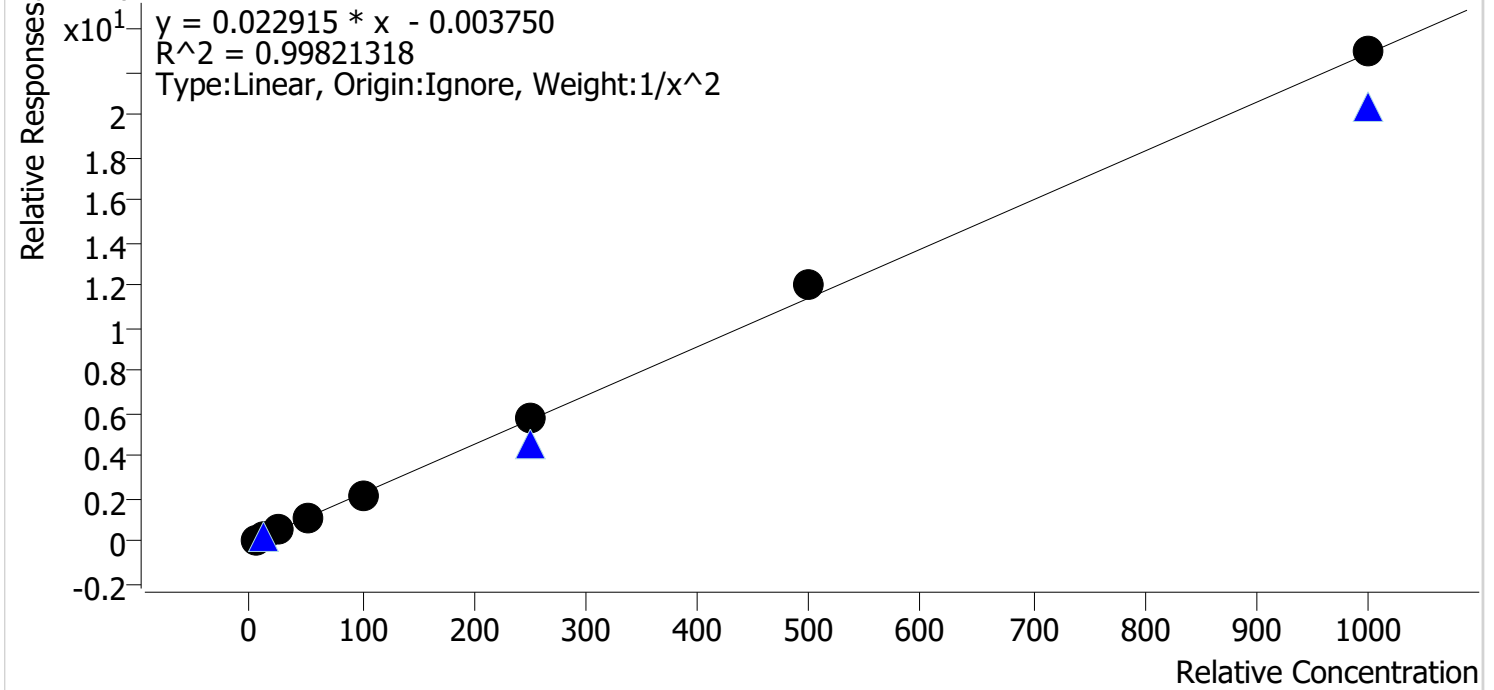
Sample	Level	Enabled	Expected Concentration	Final Concentration	Accuracy
cal 1 mdq	1	✓	5.0	5.1	101.3
cal 2 mdq	2	✓	10.0	9.8	97.7
cal 3 mdq	3	✓	25.0	25.4	101.7
cal 4 mdq	4	✓	50.0	47.1	94.3
cal 5 mdq	5	✓	100.0	101.5	101.5
cal 6 mdq	6	✓	250.0	250.5	100.2
cal 7 mdq	7	✓	500.0	519.7	103.9
cal 8 mdq	8	✓	1000.0	994.3	99.4

Compound Calibration Report

BWylee

Batch results D:\MassHunter\Data\2024\am 27-28\040524\QuantResults\mdqp1 4-5-24 final.batch.t
Last Cal. Update 4/6/2024 12:12 PM
Analyst Name ISP\datastor
Analyte Diphenhydramine **Internal Standard** Diphenhydramine-D3

Diphenhydramine - 8 Levels, 8 Levels Used, 8 Points, 8 Points Used, 3 QCs



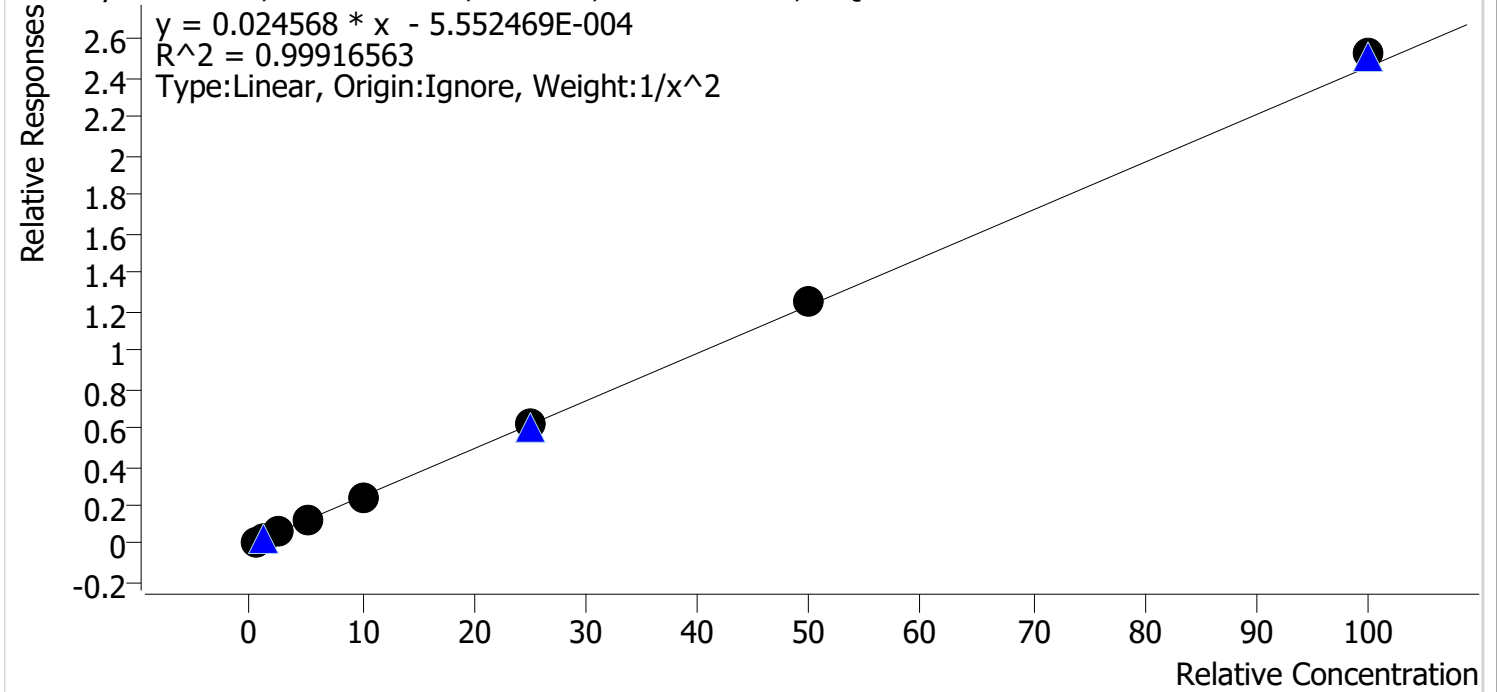
Sample	Level	Enabled	Expected Concentration	Final Concentration	Accuracy
cal 1 mdq	1	✓	5.0	5.2	103.4
cal 2 mdq	2	✓	10.0	9.4	94.1
cal 3 mdq	3	✓	25.0	24.6	98.2
cal 4 mdq	4	✓	50.0	50.0	100.0
cal 5 mdq	5	✓	100.0	97.1	97.1
cal 6 mdq	6	✓	250.0	251.9	100.7
cal 7 mdq	7	✓	500.0	530.3	106.1
cal 8 mdq	8	✓	1000.0	1003.7	100.4

Compound Calibration Report



Batch results D:\MassHunter\Data\2024\am 27-28\040524\QuantResults\mdqp1 4-5-24 final.batch.t
Last Cal. Update 4/6/2024 12:12 PM
Analyst Name ISP\datastor
Analyte Fentanyl **Internal Standard** Fentanyl-D5

Fentanyl - 8 Levels, 8 Levels Used, 8 Points, 8 Points Used, 3 QCs

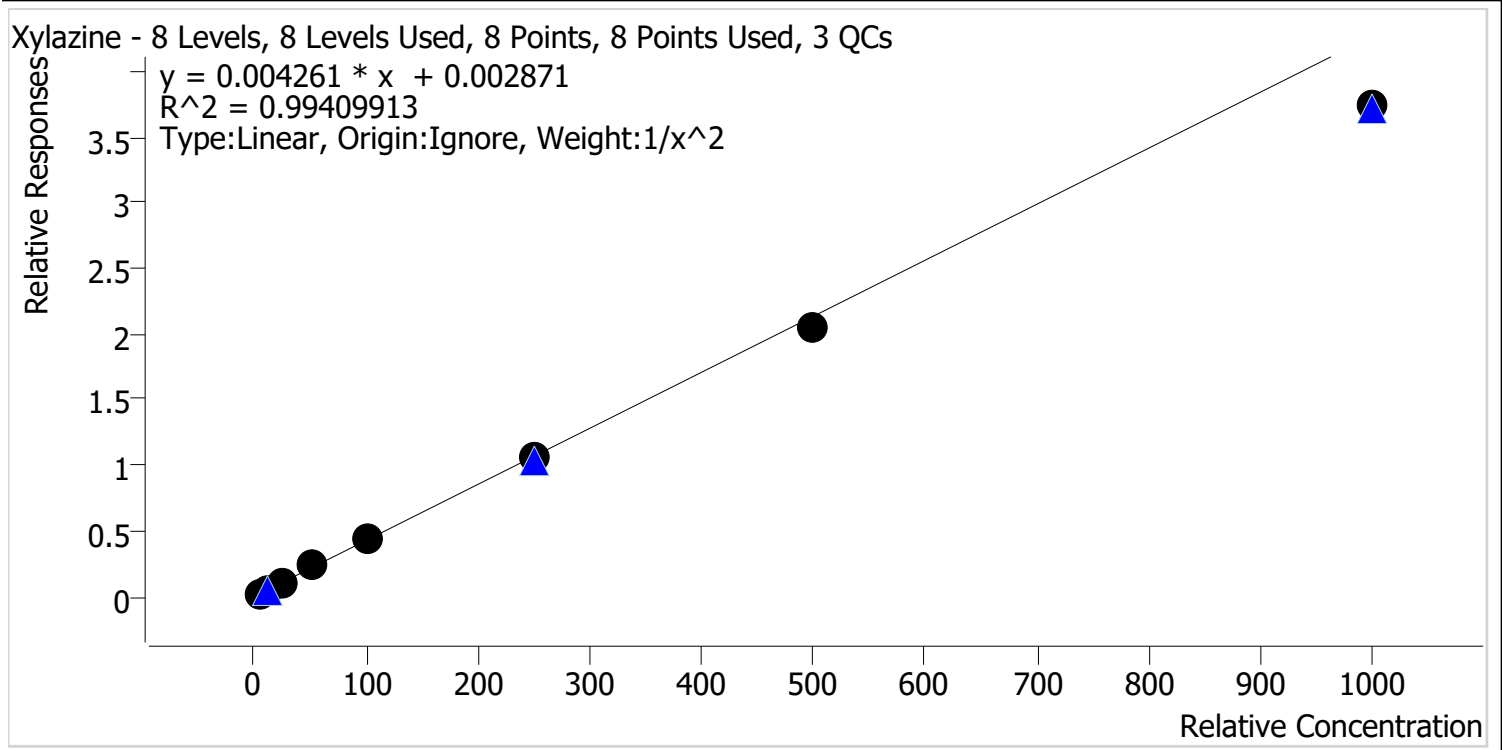


Sample	Level	Enabled	Expected Concentration	Final Concentration	Accuracy
cal 1 mdq	1	✓	0.5	0.5	102.3
cal 2 mdq	2	✓	1.0	1.0	96.1
cal 3 mdq	3	✓	2.5	2.5	98.5
cal 4 mdq	4	✓	5.0	5.0	100.4
cal 5 mdq	5	✓	10.0	9.7	97.2
cal 6 mdq	6	✓	25.0	25.1	100.4
cal 7 mdq	7	✓	50.0	51.2	102.3
cal 8 mdq	8	✓	100.0	102.8	102.8

Compound Calibration Report



Batch results D:\MassHunter\Data\2024\am 27-28\040524\QuantResults\mdqp1 4-5-24 final.batch.k
Last Cal. Update 4/6/2024 12:12 PM
Analyst Name ISP\datastor
Analyte Xylazine **Internal Standard** Xylazine - D6



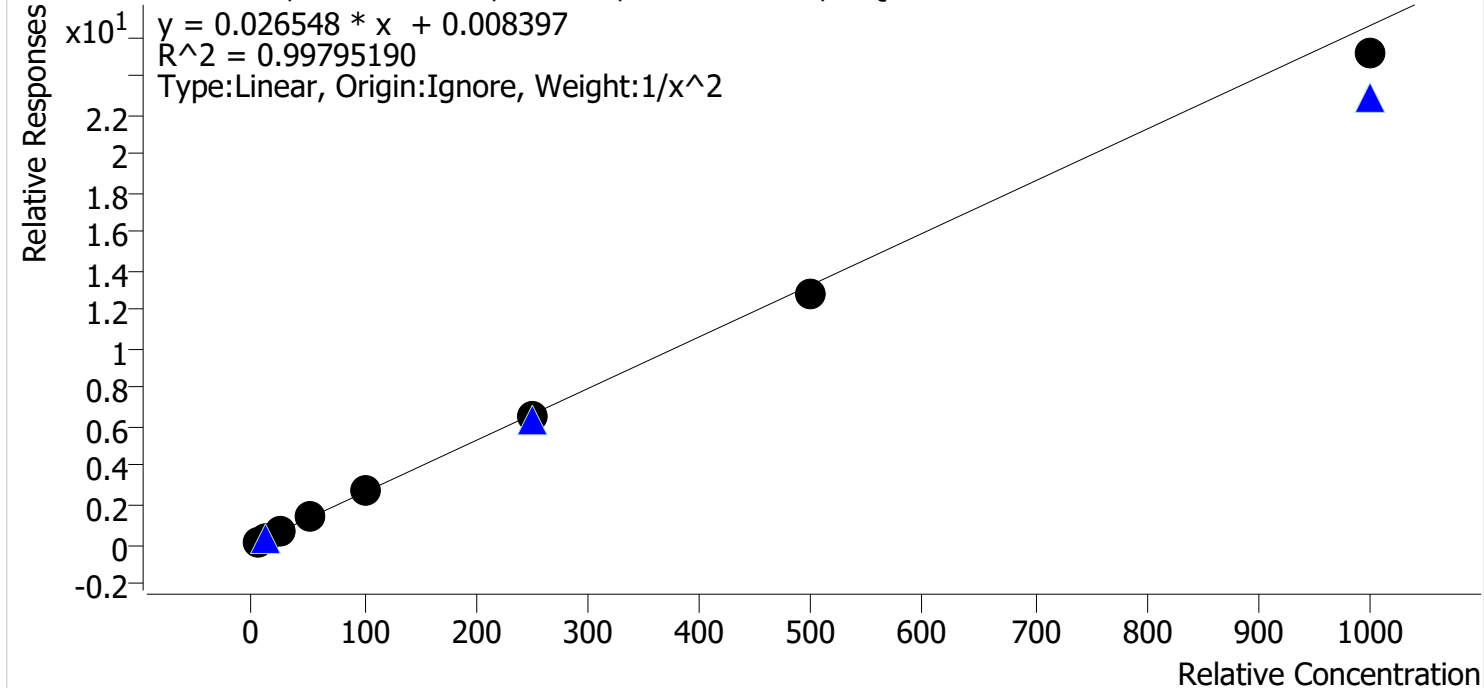
Sample	Level	Enabled	Expected Concentration	Final Concentration	Accuracy
cal 1 mdq	1	✓	5.0	4.8	95.6
cal 2 mdq	2	✓	10.0	10.5	104.8
cal 3 mdq	3	✓	25.0	26.6	106.2
cal 4 mdq	4	✓	50.0	53.6	107.2
cal 5 mdq	5	✓	100.0	102.7	102.7
cal 6 mdq	6	✓	250.0	250.4	100.1
cal 7 mdq	7	✓	500.0	478.4	95.7
cal 8 mdq	8	✓	1000.0	876.0	87.6

Compound Calibration Report



Batch results D:\MassHunter\Data\2024\am 27-28\040524\QuantResults\mdqp1 4-5-24 final.batch.k
Last Cal. Update 4/6/2024 12:12 PM
Analyst Name ISP\datastor
Analyte Fluoxetine **Internal Standard** Fluoxetine-D6

Fluoxetine - 8 Levels, 8 Levels Used, 8 Points, 8 Points Used, 3 QCs

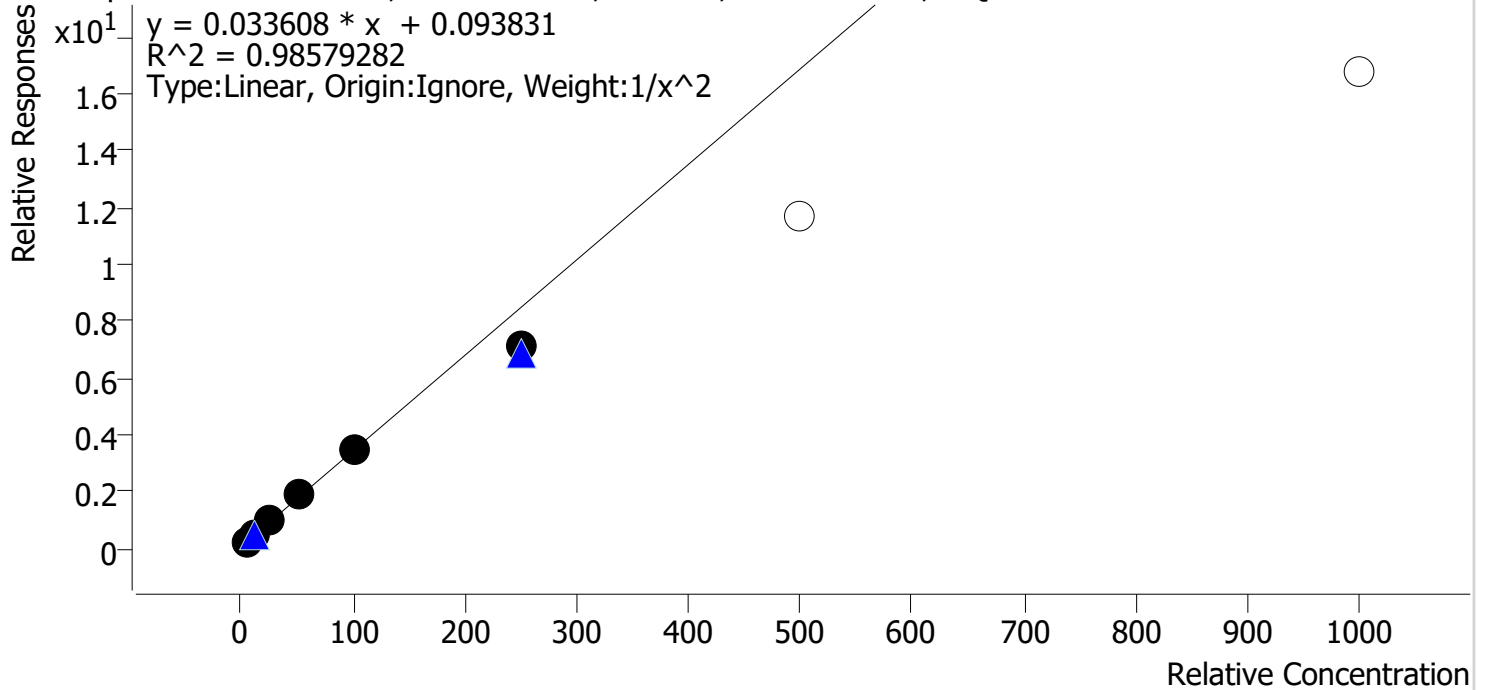


Sample	Level	Enabled	Expected Concentration	Final Concentration	Accuracy
cal 1 mdq	1	✓	5.0	4.9	98.2
cal 2 mdq	2	✓	10.0	10.1	101.2
cal 3 mdq	3	✓	25.0	25.7	102.8
cal 4 mdq	4	✓	50.0	53.2	106.5
cal 5 mdq	5	✓	100.0	102.3	102.3
cal 6 mdq	6	✓	250.0	246.4	98.6
cal 7 mdq	7	✓	500.0	479.5	95.9
cal 8 mdq	8	✓	1000.0	945.9	94.6

Compound Calibration Report

Batch results D:\MassHunter\Data\2024\am 27-28\040524\QuantResults\mdqp1 4-5-24 final.batch.k
Last Cal. Update 4/6/2024 12:12 PM
Analyst Name ISP\datastor
Analyte Methamphetamine **Internal Standard** **Methamphetamine-D11**

Methamphetamine - 8 Levels, 6 Levels Used, 8 Points, 6 Points Used, 3 QCs



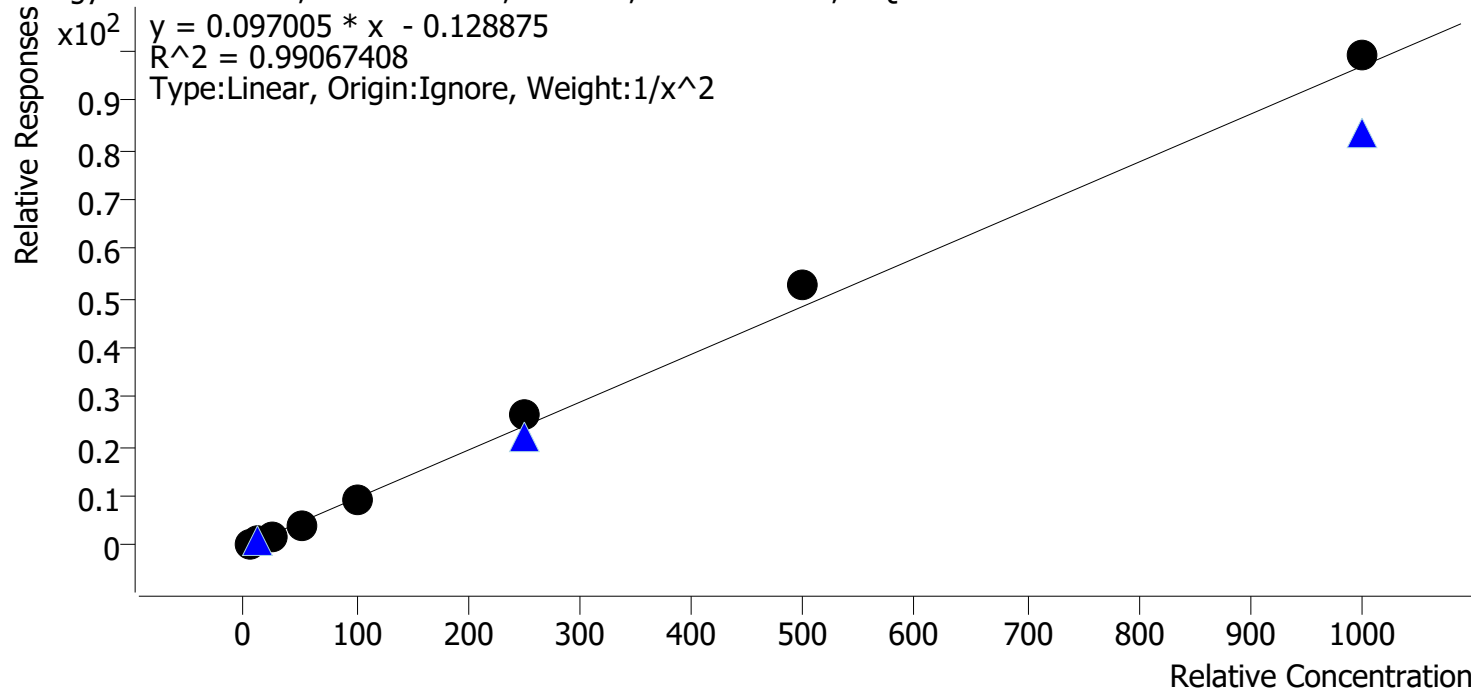
Sample	Level	Enabled	Expected Concentration	Final Concentration	Accuracy
cal 1 mdq	1	✓	5.0	4.7	94.0
cal 2 mdq	2	✓	10.0	10.8	107.9
cal 3 mdq	3	✓	25.0	27.4	109.4
cal 4 mdq	4	✓	50.0	52.6	105.3
cal 5 mdq	5	✓	100.0	99.7	99.7
cal 6 mdq	6	✓	250.0	209.4	83.8
cal 7 mdq	7	✗	500.0	347.5	69.5
cal 8 mdq	8	✗	1000.0	497.3	49.7

Compound Calibration Report



Batch results D:\MassHunter\Data\2024\am 27-28\040524\QuantResults\mdqp1 4-5-24 final.batch.t
Last Cal. Update 4/6/2024 12:12 PM
Analyst Name ISP\datastor
Analyte Mitragynine **Internal Standard** Codeine-D6

Mitragynine - 8 Levels, 8 Levels Used, 8 Points, 8 Points Used, 3 QCs



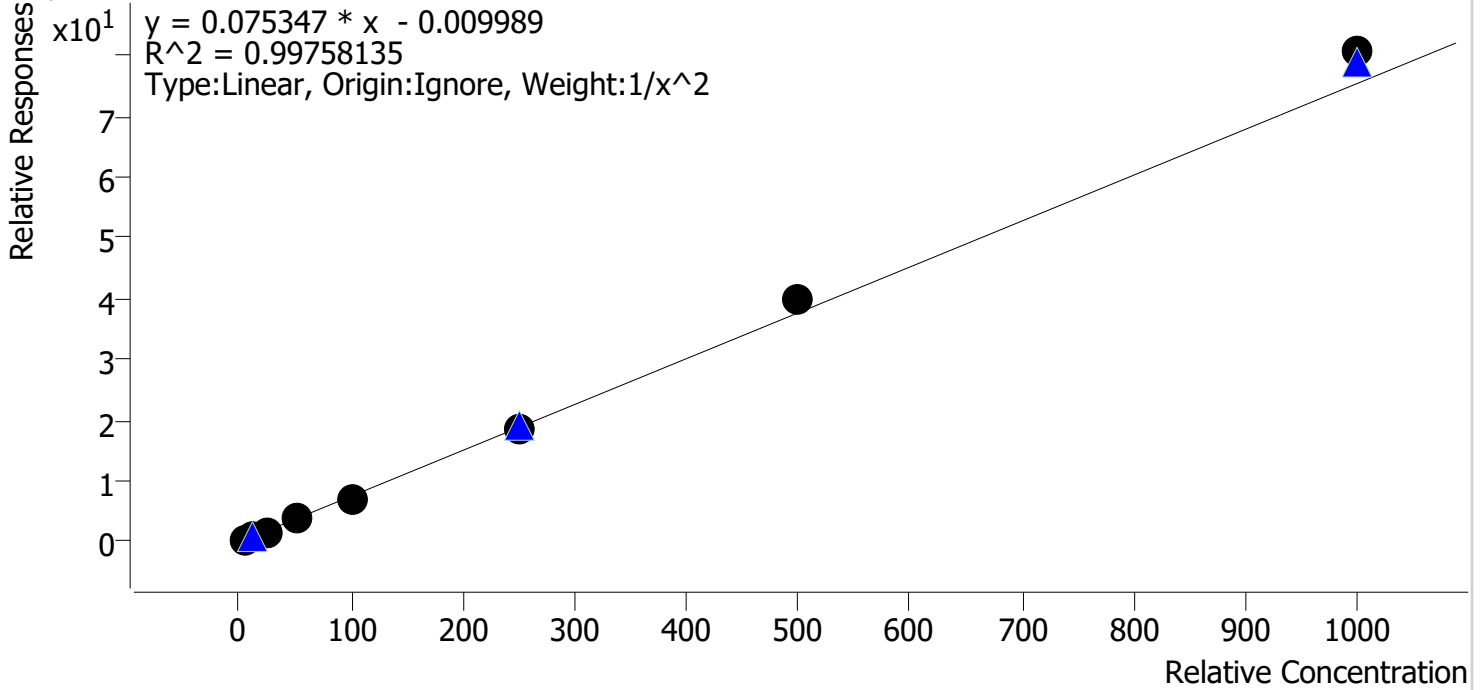
Sample	Level	Enabled	Expected Concentration	Final Concentration	Accuracy
cal 1 mdq	1	✓	5.0	5.3	106.0
cal 2 mdq	2	✓	10.0	9.3	93.0
cal 3 mdq	3	✓	25.0	23.1	92.3
cal 4 mdq	4	✓	50.0	43.7	87.4
cal 5 mdq	5	✓	100.0	99.6	99.6
cal 6 mdq	6	✓	250.0	276.1	110.4
cal 7 mdq	7	✓	500.0	545.0	109.0
cal 8 mdq	8	✓	1000.0	1022.1	102.2

Compound Calibration Report



Batch results D:\MassHunter\Data\2024\am 27-28\040524\QuantResults\mdq1 4-5-24 final.batch.k
Last Cal. Update 4/6/2024 12:12 PM
Analyst Name ISP\datastor
Analyte Morphine **Internal Standard** Morphine-D6

Morphine - 8 Levels, 8 Levels Used, 8 Points, 8 Points Used, 3 QCs



Sample	Level	Enabled	Expected Concentration	Final Concentration	Accuracy
cal 1 mdq	1	✓	5.0	5.1	102.0
cal 2 mdq	2	✓	10.0	9.8	98.3
cal 3 mdq	3	✓	25.0	23.9	95.7
cal 4 mdq	4	✓	50.0	49.4	98.9
cal 5 mdq	5	✓	100.0	95.3	95.3
cal 6 mdq	6	✓	250.0	244.3	97.7
cal 7 mdq	7	✓	500.0	525.4	105.1
cal 8 mdq	8	✓	1000.0	1069.6	107.0

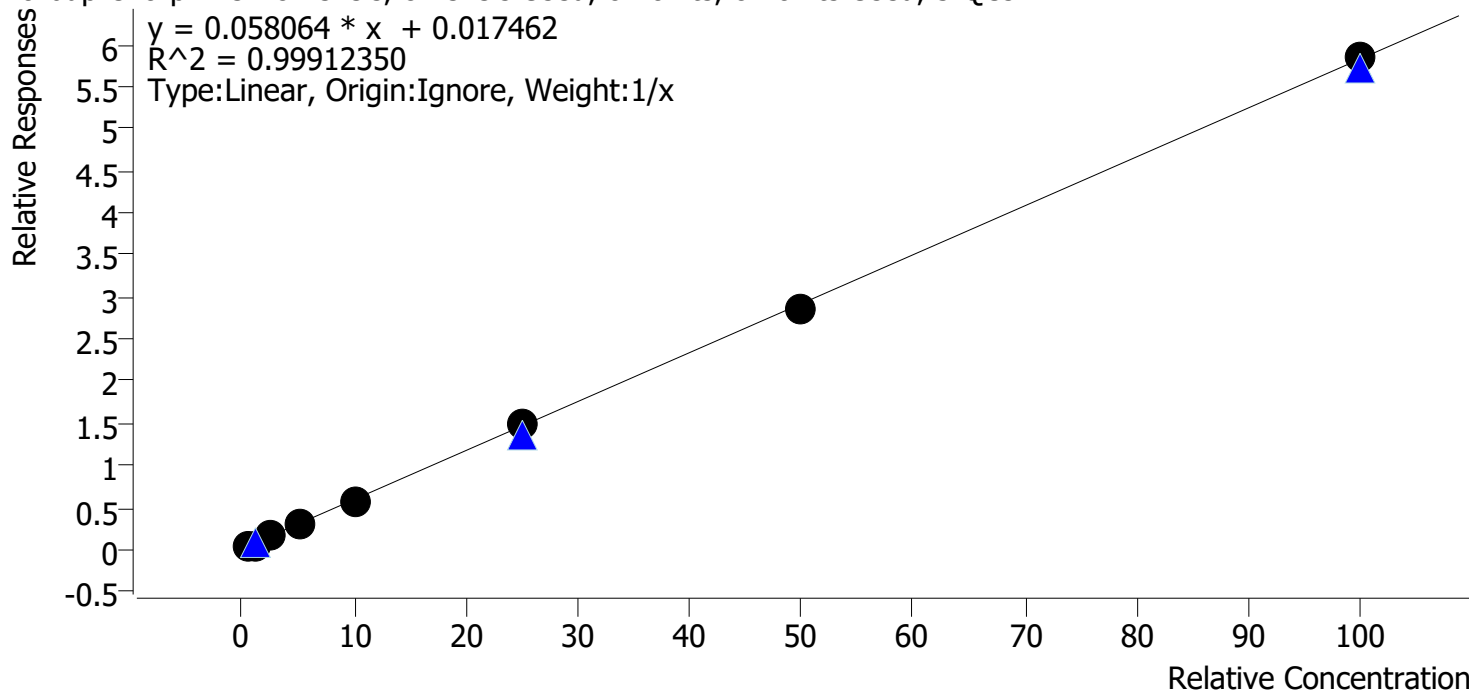
Compound Calibration Report

Batch results D:\MassHunter\Data\2024\am 27-28\040524\QuantResults\mdqp1 4-5-24 final.batch.b
Last Cal. Update 4/9/2024 10:30 AM
Analyst Name ISP\datastor
Analyte Norbuprenorphine

Byylee

Internal Standard Norbuprenorphine-D3

Norbuprenorphine - 8 Levels, 8 Levels Used, 8 Points, 8 Points Used, 3 QCs



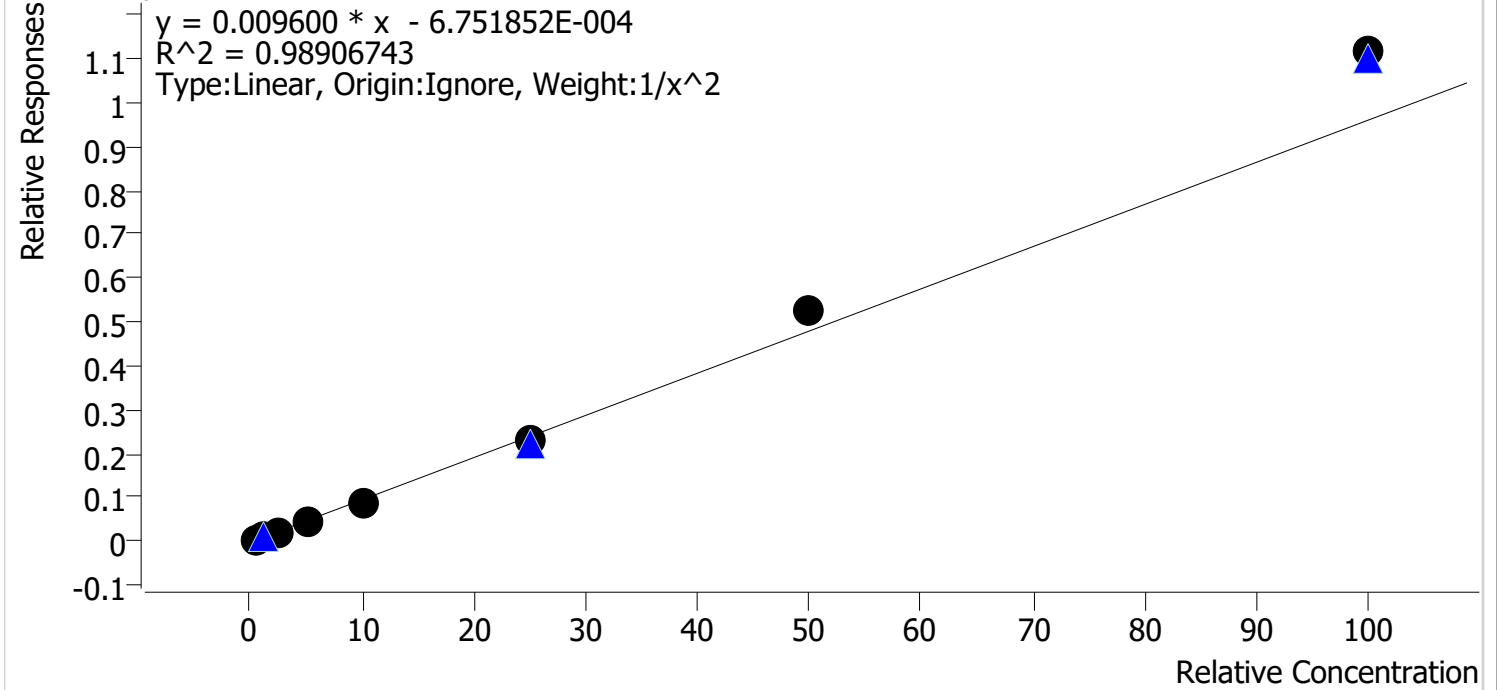
Sample	Level	Enabled	Expected Concentration	Final Concentration	Accuracy
cal 1 mdq	1	✓	0.5	0.6	110.0
cal 2 mdq	2	✓	1.0	0.8	76.5
cal 3 mdq	3	✓	2.5	2.7	109.3
cal 4 mdq	4	✓	5.0	5.3	106.5
cal 5 mdq	5	✓	10.0	9.7	96.6
cal 6 mdq	6	✓	25.0	25.7	102.8
cal 7 mdq	7	✓	50.0	49.0	98.0
cal 8 mdq	8	✓	100.0	100.3	100.3

Compound Calibration Report

B. Wylee

Batch results D:\MassHunter\Data\2024\am 27-28\040524\QuantResults\mdqp1 4-5-24 final.batch.t
Last Cal. Update 4/6/2024 12:12 PM
Analyst Name ISP\datastor
Analyte Norfentanyl **Internal Standard** Norfentanyl-D5

Norfentanyl - 8 Levels, 8 Levels Used, 8 Points, 8 Points Used, 3 QCs



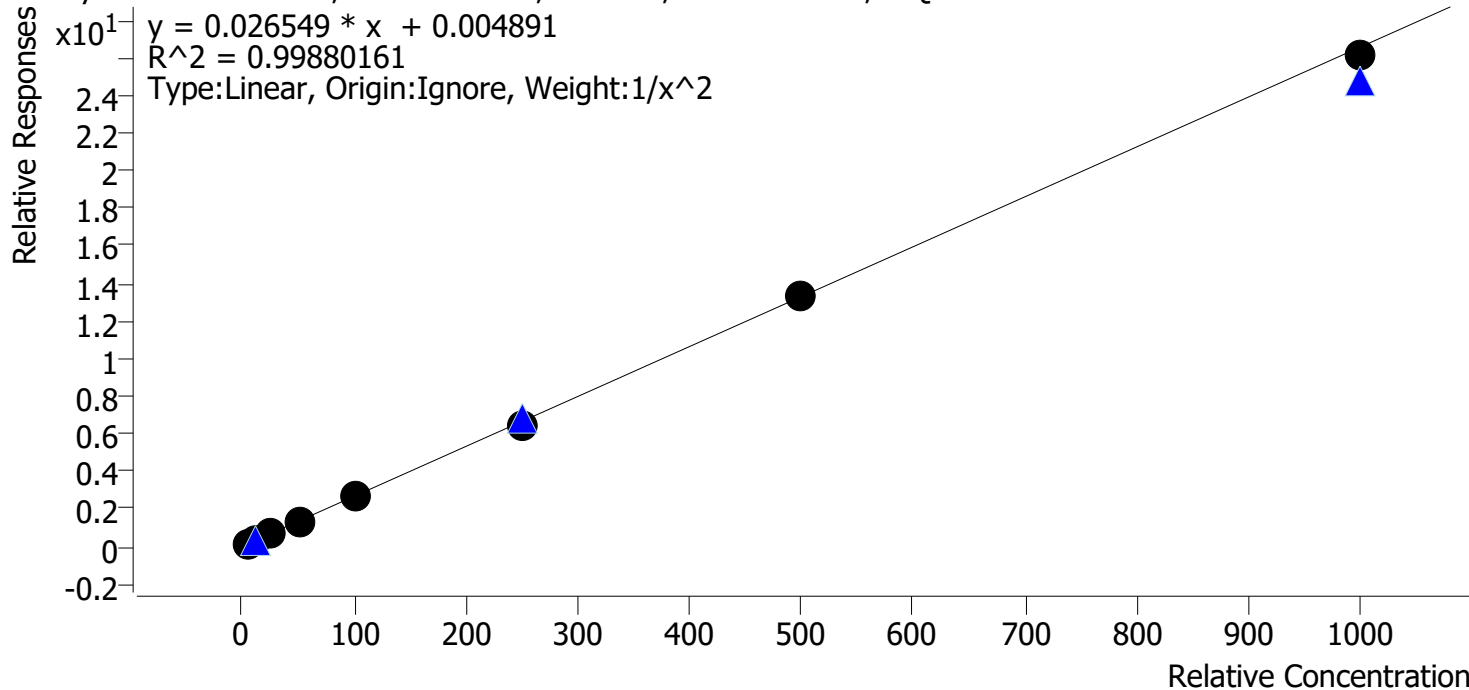
Sample	Level	Enabled	Expected Concentration	Final Concentration	Accuracy
cal 1 mdq	1	✓	0.5	0.5	104.1
cal 2 mdq	2	✓	1.0	1.0	97.6
cal 3 mdq	3	✓	2.5	2.2	90.0
cal 4 mdq	4	✓	5.0	4.6	92.8
cal 5 mdq	5	✓	10.0	9.3	93.5
cal 6 mdq	6	✓	25.0	24.1	96.4
cal 7 mdq	7	✓	50.0	54.7	109.4
cal 8 mdq	8	✓	100.0	116.3	116.3

Compound Calibration Report



Batch results D:\MassHunter\Data\2024\am 27-28\040524\QuantResults\mdqp1 4-5-24 final.batch.k
Last Cal. Update 4/6/2024 12:12 PM
Analyst Name ISP\datastor
Analyte Noroxycodone **Internal Standard** Noroxycodone-D3

Noroxycodone - 8 Levels, 8 Levels Used, 8 Points, 8 Points Used, 3 QCs



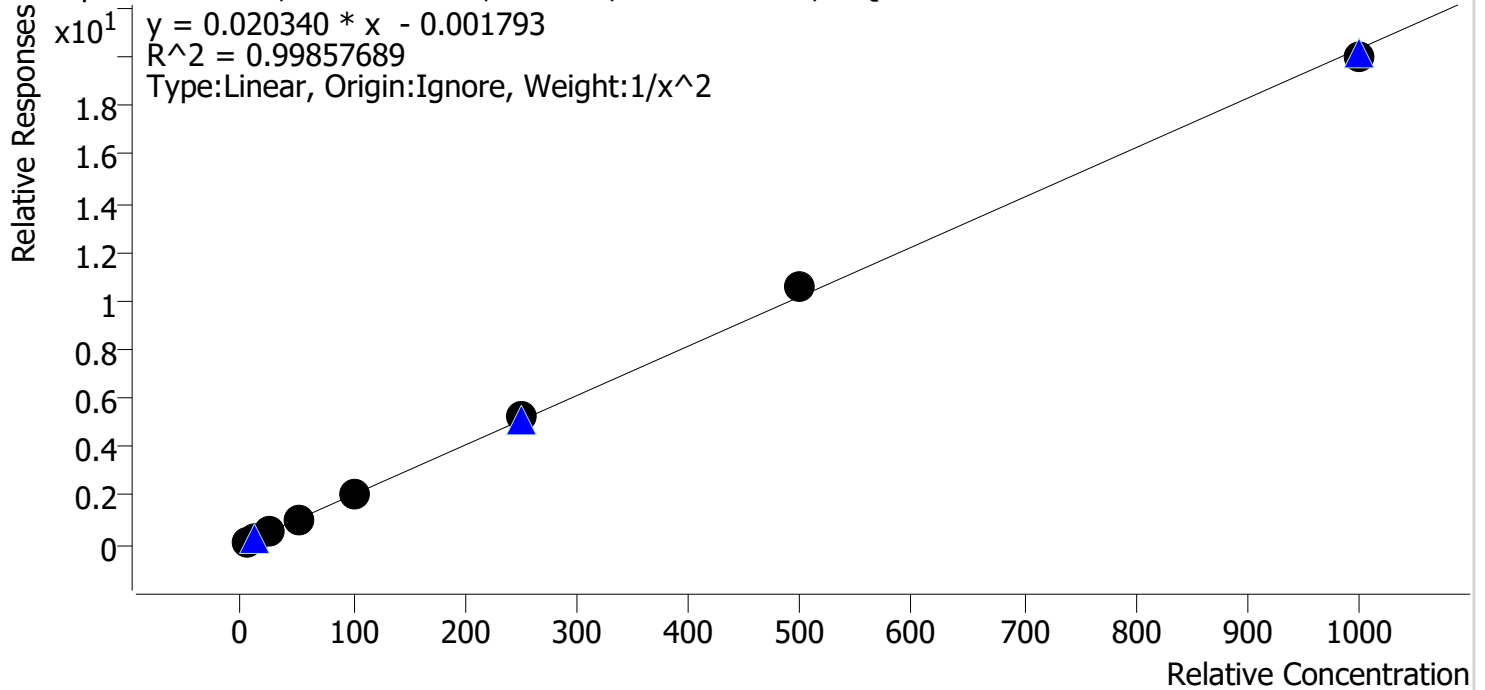
Sample	Level	Enabled	Expected Concentration	Final Concentration	Accuracy
cal 1 mdq	1	✓	5.0	5.0	99.2
cal 2 mdq	2	✓	10.0	9.9	99.0
cal 3 mdq	3	✓	25.0	26.4	105.6
cal 4 mdq	4	✓	50.0	51.3	102.7
cal 5 mdq	5	✓	100.0	100.0	100.0
cal 6 mdq	6	✓	250.0	238.7	95.5
cal 7 mdq	7	✓	500.0	498.9	99.8
cal 8 mdq	8	✓	1000.0	983.1	98.3

Compound Calibration Report



Batch results D:\MassHunter\Data\2024\am 27-28\040524\QuantResults\mdqp1 4-5-24 final.batch.t
Last Cal. Update 4/6/2024 12:12 PM
Analyst Name ISP\datastor
Analyte Oxazepam **Internal Standard** Oxazepam-D5

Oxazepam - 8 Levels, 8 Levels Used, 8 Points, 8 Points Used, 3 QCs



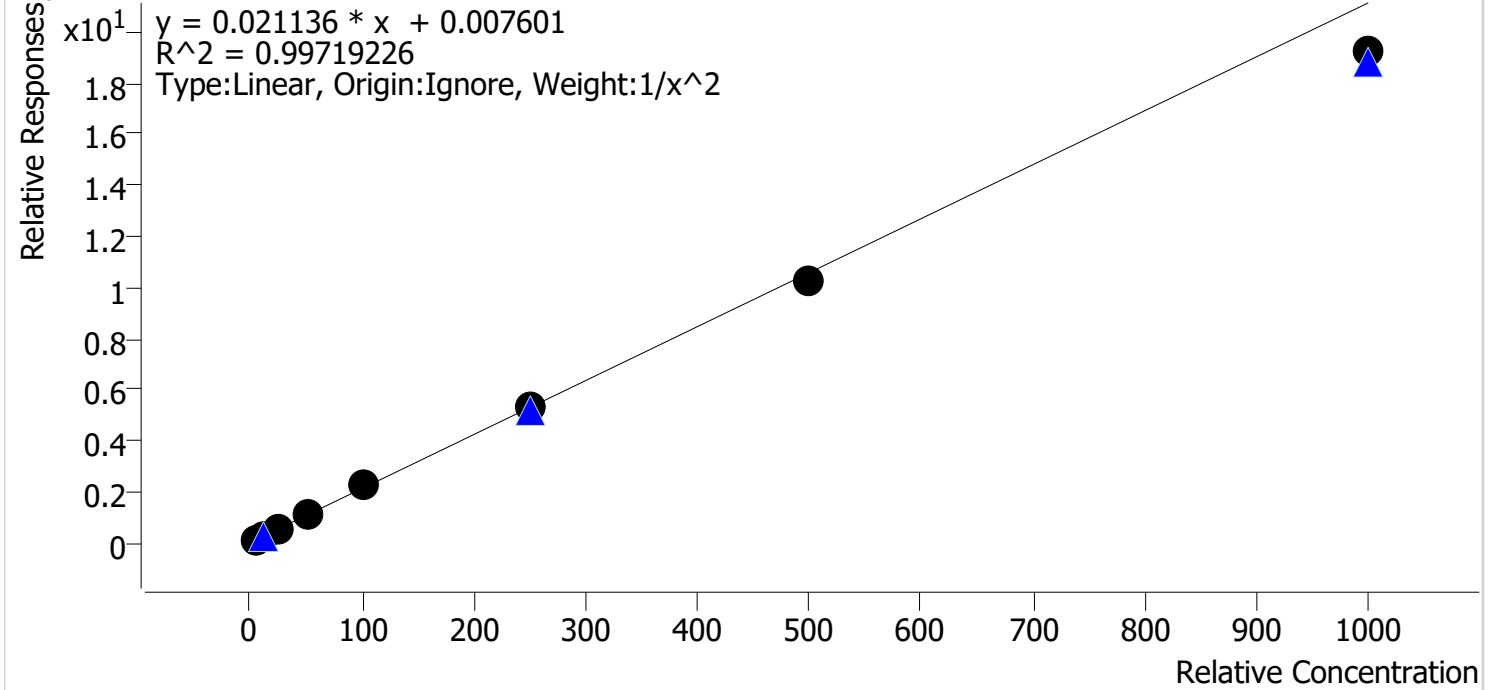
Sample	Level	Enabled	Expected Concentration	Final Concentration	Accuracy
cal 1 mdq	1	✓	5.0	5.1	102.5
cal 2 mdq	2	✓	10.0	9.5	94.9
cal 3 mdq	3	✓	25.0	25.4	101.8
cal 4 mdq	4	✓	50.0	48.5	97.0
cal 5 mdq	5	✓	100.0	98.4	98.4
cal 6 mdq	6	✓	250.0	255.4	102.1
cal 7 mdq	7	✓	500.0	523.2	104.6
cal 8 mdq	8	✓	1000.0	986.4	98.6

Compound Calibration Report



Batch results D:\MassHunter\Data\2024\am 27-28\040524\QuantResults\mdqp1 4-5-24 final.batch.t
Last Cal. Update 4/6/2024 12:12 PM
Analyst Name ISP\datastor
Analyte Oxycodone **Internal Standard** Oxycodone-D6

Oxycodone - 8 Levels, 8 Levels Used, 8 Points, 8 Points Used, 3 QCs



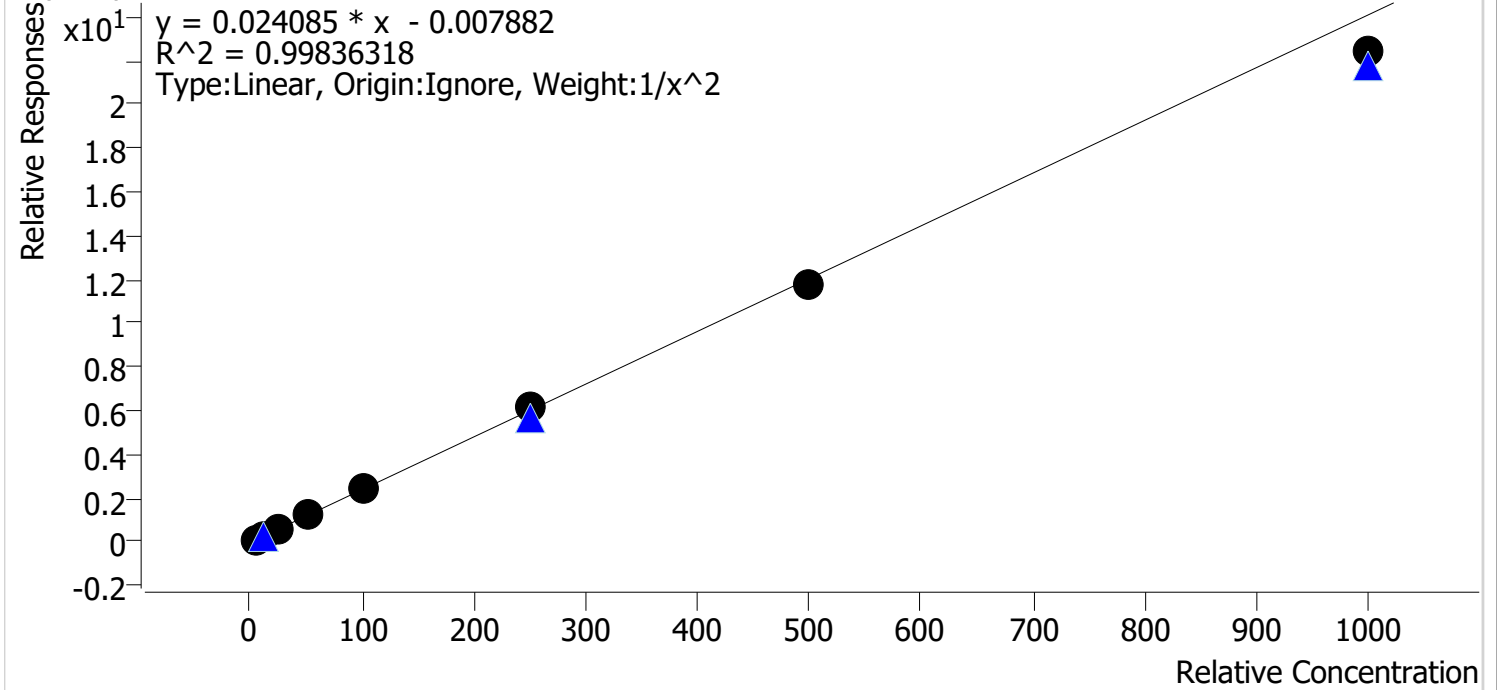
Sample	Level	Enabled	Expected Concentration	Final Concentration	Accuracy
cal 1 mdq	1	✓	5.0	4.9	98.8
cal 2 mdq	2	✓	10.0	9.9	99.3
cal 3 mdq	3	✓	25.0	26.3	105.2
cal 4 mdq	4	✓	50.0	52.0	104.0
cal 5 mdq	5	✓	100.0	103.9	103.9
cal 6 mdq	6	✓	250.0	250.6	100.2
cal 7 mdq	7	✓	500.0	487.6	97.5
cal 8 mdq	8	✓	1000.0	909.7	91.0

Compound Calibration Report



Batch results D:\MassHunter\Data\2024\am 27-28\040524\QuantResults\mdqp1 4-5-24 final.batch.k
Last Cal. Update 4/6/2024 12:12 PM
Analyst Name ISP\datastor
Analyte Oxymorphone **Internal Standard** Oxymorphone-D3

Oxymorphone - 8 Levels, 8 Levels Used, 8 Points, 8 Points Used, 3 QCs



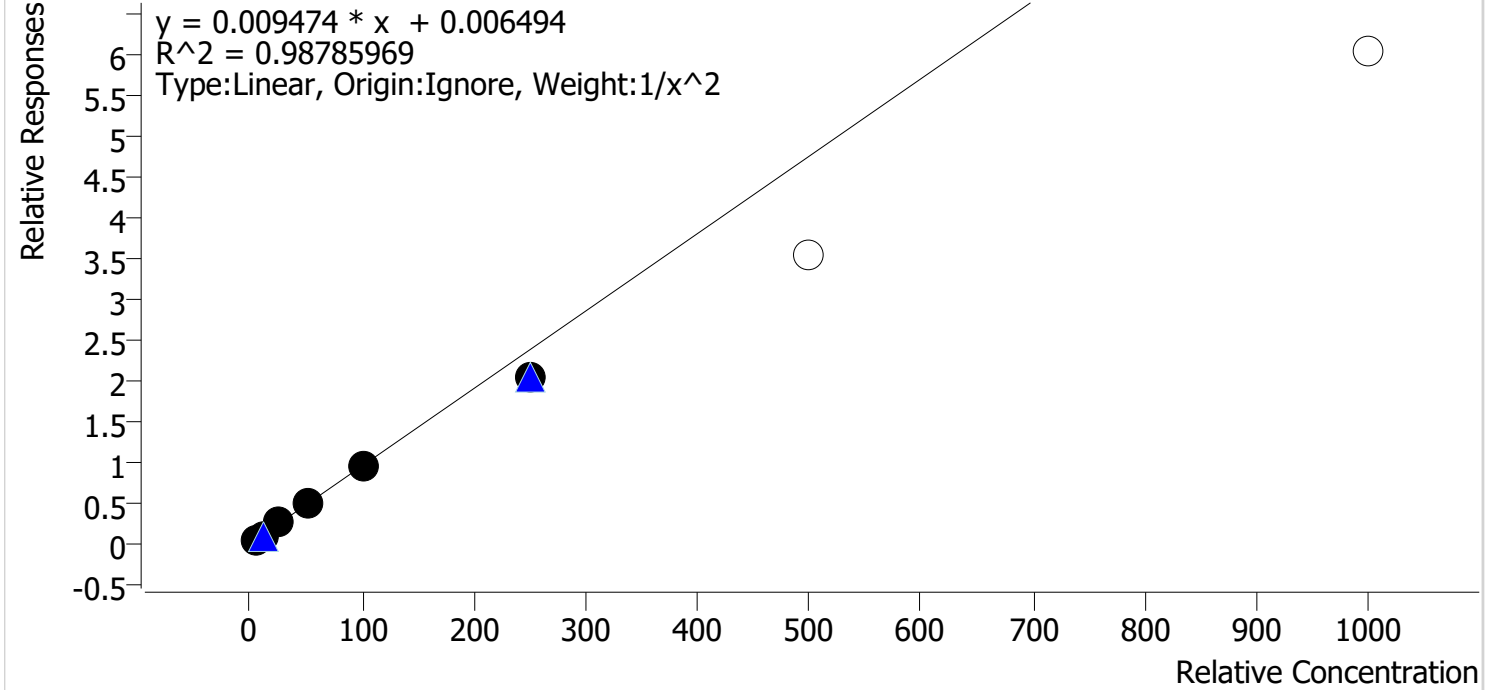
Sample	Level	Enabled	Expected Concentration	Final Concentration	Accuracy
cal 1 mdq	1	✓	5.0	5.0	99.3
cal 2 mdq	2	✓	10.0	10.0	100.2
cal 3 mdq	3	✓	25.0	25.0	99.9
cal 4 mdq	4	✓	50.0	52.3	104.6
cal 5 mdq	5	✓	100.0	103.1	103.1
cal 6 mdq	6	✓	250.0	254.7	101.9
cal 7 mdq	7	✓	500.0	490.1	98.0
cal 8 mdq	8	✓	1000.0	930.4	93.0

Compound Calibration Report



Batch results D:\MassHunter\Data\2024\am 27-28\040524\QuantResults\mdqp1 4-5-24 final.batch.t
Last Cal. Update 4/6/2024 12:12 PM
Analyst Name ISP\datastor
Analyte Phentermine **Internal Standard** Phentermine-D5

Phentermine - 8 Levels, 6 Levels Used, 8 Points, 6 Points Used, 3 QCs

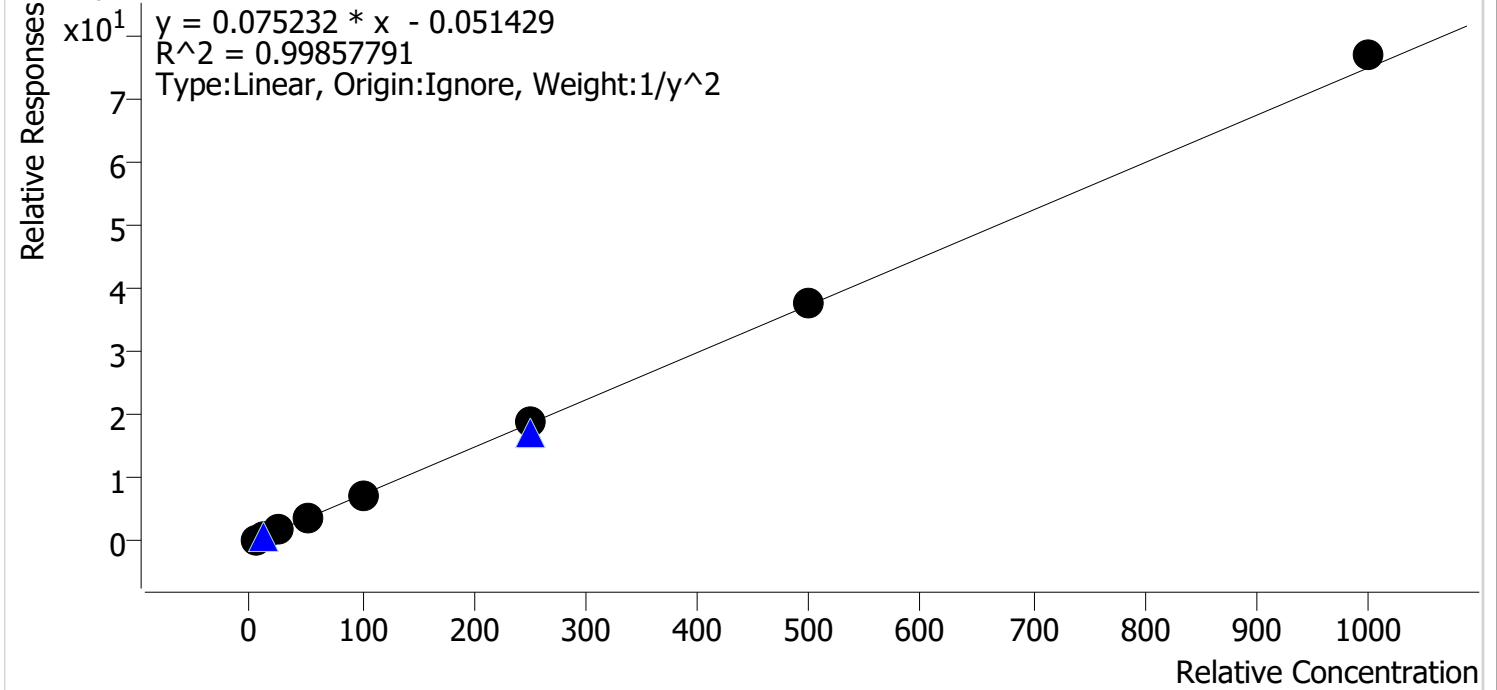


Sample	Level	Enabled	Expected Concentration	Final Concentration	Accuracy
cal 1 mdq	1	✓	5.0	4.7	94.5
cal 2 mdq	2	✓	10.0	10.7	107.2
cal 3 mdq	3	✓	25.0	27.0	107.8
cal 4 mdq	4	✓	50.0	53.4	106.7
cal 5 mdq	5	✓	100.0	98.5	98.5
cal 6 mdq	6	✓	250.0	213.2	85.3
cal 7 mdq	7	✗	500.0	370.3	74.1
cal 8 mdq	8	✗	1000.0	634.9	63.5

Compound Calibration Report

Batch results D:\MassHunter\Data\2024\am 27-28\040524\QuantResults\mdqp1 4-5-24 final.batch.k
Last Cal. Update 4/6/2024 12:12 PM
Analyst Name ISP\datastor
Analyte Quetiapine **Internal Standard** Quetiapine-D8

Quetiapine - 8 Levels, 8 Levels Used, 8 Points, 8 Points Used, 3 QCs



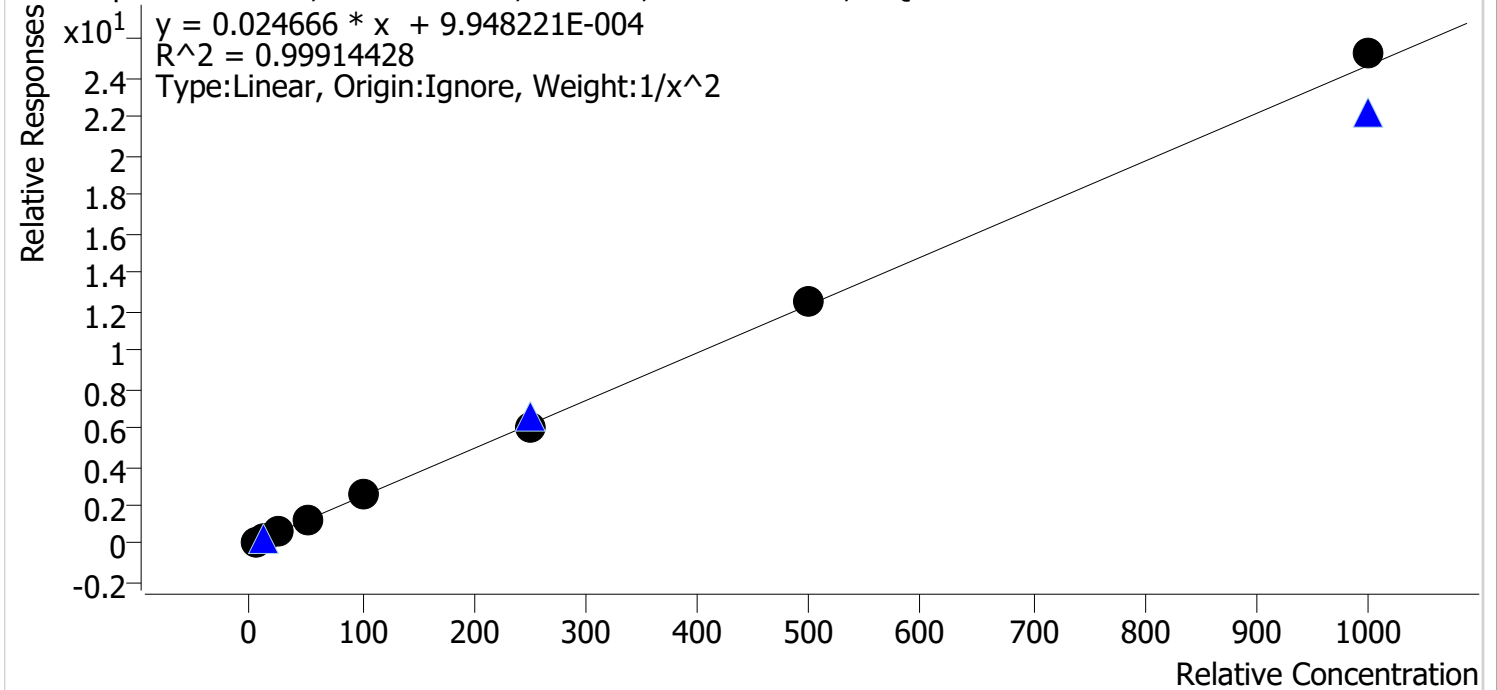
Sample	Level	Enabled	Expected Concentration	Final Concentration	Accuracy
cal 1 mdq	1	✓	5.0	5.2	103.2
cal 2 mdq	2	✓	10.0	9.4	93.7
cal 3 mdq	3	✓	25.0	25.2	101.0
cal 4 mdq	4	✓	50.0	49.6	99.1
cal 5 mdq	5	✓	100.0	100.5	100.5
cal 6 mdq	6	✓	250.0	251.0	100.4
cal 7 mdq	7	✓	500.0	502.4	100.5
cal 8 mdq	8	✓	1000.0	1029.9	103.0

Compound Calibration Report



Batch results D:\MassHunter\Data\2024\am 27-28\040524\QuantResults\mdqp1 4-5-24 final.batch.t
Last Cal. Update 4/6/2024 12:12 PM
Analyst Name ISP\datastor
Analyte Temazepam **Internal Standard** Temazepam-D5

Temazepam - 8 Levels, 8 Levels Used, 8 Points, 8 Points Used, 3 QCs



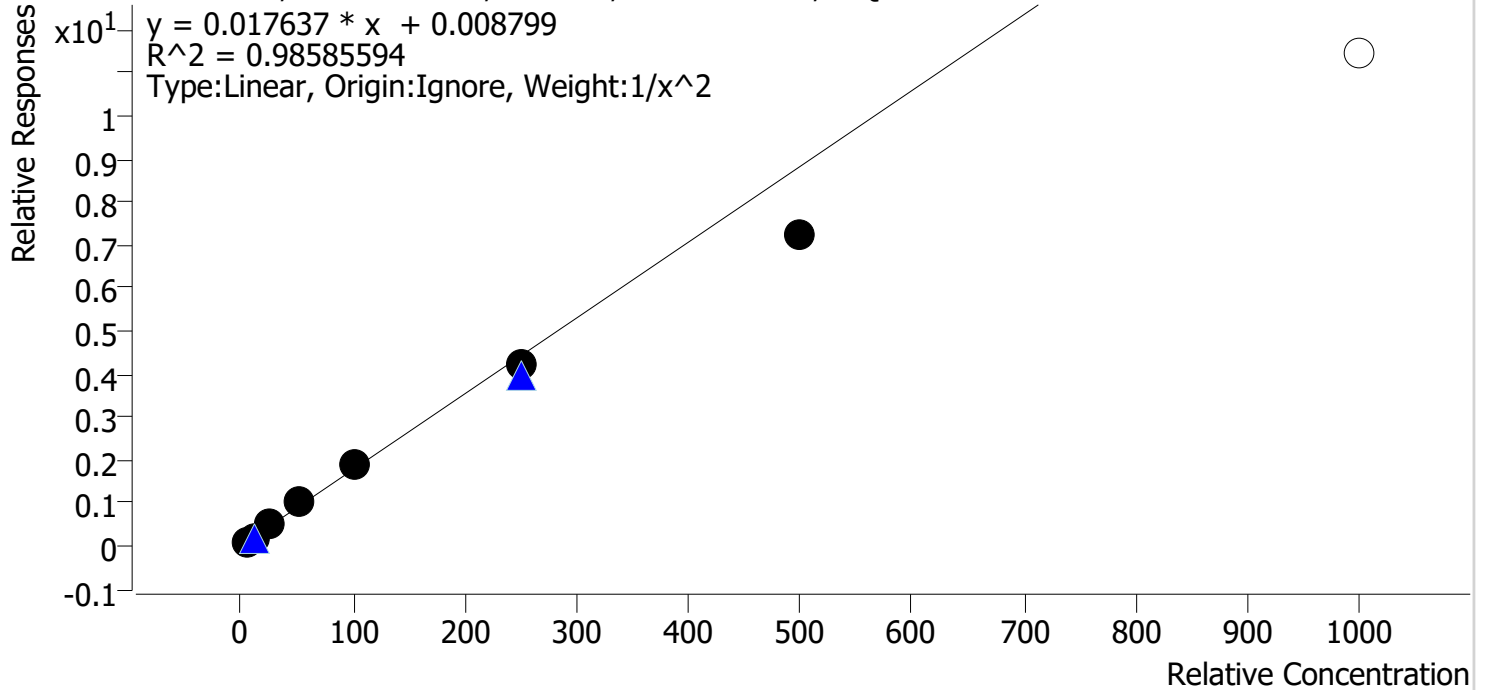
Sample	Level	Enabled	Expected Concentration	Final Concentration	Accuracy
cal 1 mdq	1	✓	5.0	5.1	102.2
cal 2 mdq	2	✓	10.0	9.5	95.5
cal 3 mdq	3	✓	25.0	25.4	101.4
cal 4 mdq	4	✓	50.0	48.7	97.5
cal 5 mdq	5	✓	100.0	101.1	101.1
cal 6 mdq	6	✓	250.0	246.4	98.6
cal 7 mdq	7	✓	500.0	506.3	101.3
cal 8 mdq	8	✓	1000.0	1025.1	102.5

Compound Calibration Report



Batch results D:\MassHunter\Data\2024\am 27-28\040524\QuantResults\mdqp1 4-5-24 final.batch.k
Last Cal. Update 4/6/2024 12:12 PM
Analyst Name ISP\datastor
Analyte Trazodone **Internal Standard** Trazodone-D6

Trazodone - 8 Levels, 7 Levels Used, 8 Points, 7 Points Used, 3 QCs



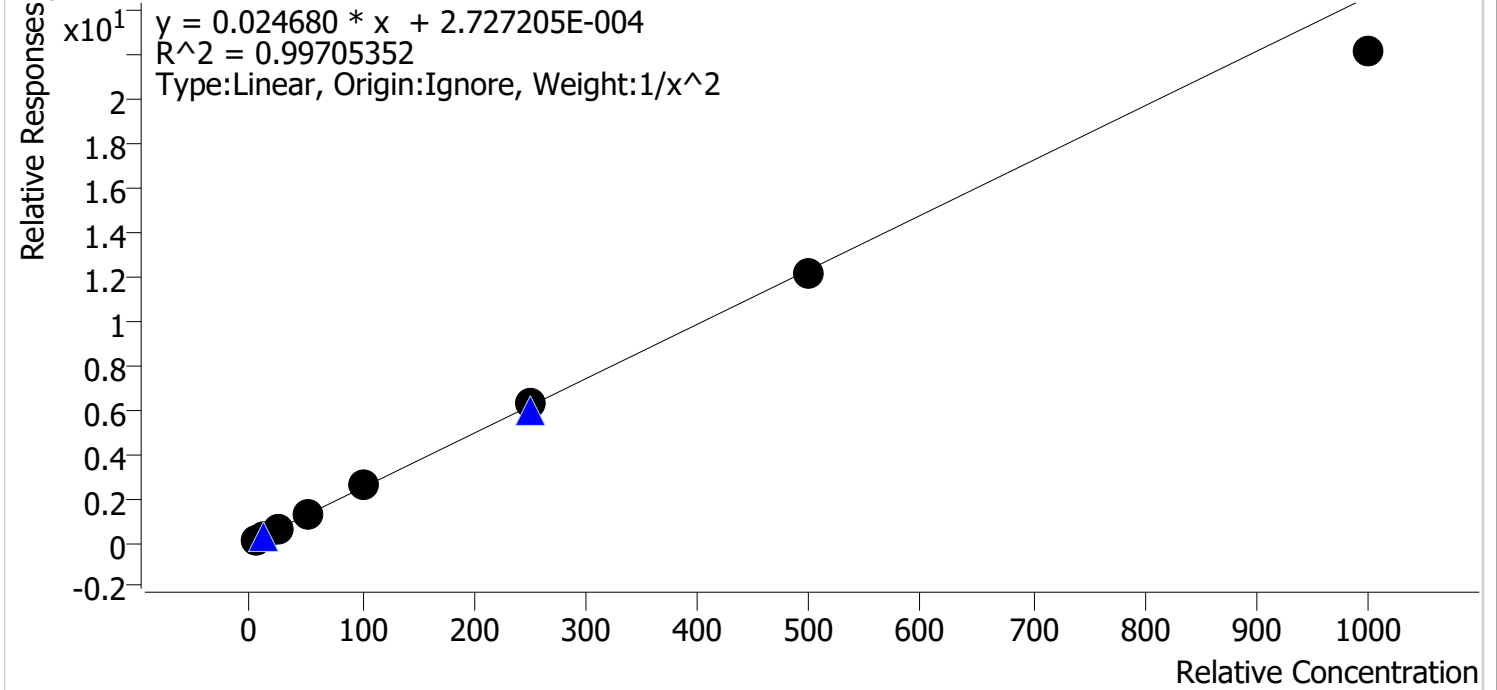
Sample	Level	Enabled	Expected Concentration	Final Concentration	Accuracy
cal 1 mdq	1	✓	5.0	4.8	95.0
cal 2 mdq	2	✓	10.0	10.5	104.7
cal 3 mdq	3	✓	25.0	27.0	108.0
cal 4 mdq	4	✓	50.0	55.4	110.7
cal 5 mdq	5	✓	100.0	105.2	105.2
cal 6 mdq	6	✓	250.0	236.3	94.5
cal 7 mdq	7	✓	500.0	409.0	81.8
cal 8 mdq	8	✗	1000.0	648.7	64.9

Compound Calibration Report



Batch results D:\MassHunter\Data\2024\am 27-28\040524\QuantResults\mdqp1 4-5-24 final.batch.t
Last Cal. Update 4/6/2024 12:12 PM
Analyst Name ISP\datastor
Analyte Zolpidem **Internal Standard** Zolpidem-D6

Zolpidem - 8 Levels, 8 Levels Used, 8 Points, 8 Points Used, 3 QCs



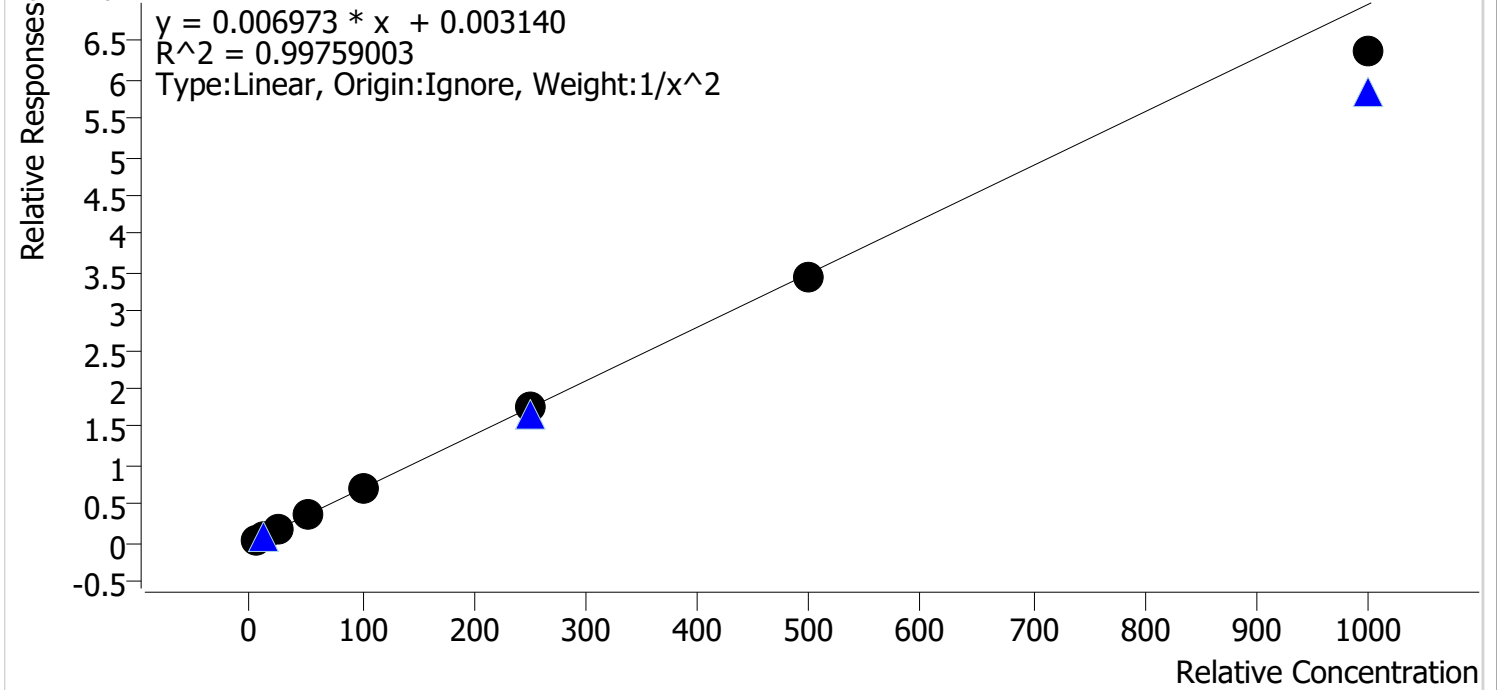
Sample	Level	Enabled	Expected Concentration	Final Concentration	Accuracy
cal 1 mdq	1	✓	5.0	4.9	98.1
cal 2 mdq	2	✓	10.0	10.2	101.6
cal 3 mdq	3	✓	25.0	25.9	103.7
cal 4 mdq	4	✓	50.0	50.9	101.8
cal 5 mdq	5	✓	100.0	104.8	104.8
cal 6 mdq	6	✓	250.0	255.2	102.1
cal 7 mdq	7	✓	500.0	489.8	98.0
cal 8 mdq	8	✓	1000.0	899.6	90.0

Compound Calibration Report

BWylee

Batch results D:\MassHunter\Data\2024\am 27-28\040524\QuantResults\mdqp1 4-5-24 final.batch.t
Last Cal. Update 4/6/2024 12:12 PM
Analyst Name ISP\datastor
Analyte Hydroxyzine **Internal Standard** **Diphenhydramine-D3**

Hydroxyzine - 8 Levels, 8 Levels Used, 8 Points, 8 Points Used, 3 QCs



Sample	Level	Enabled	Expected Concentration	Final Concentration	Accuracy
cal 1 mdq	1	✓	5.0	4.8	96.9
cal 2 mdq	2	✓	10.0	10.4	104.5
cal 3 mdq	3	✓	25.0	25.6	102.2
cal 4 mdq	4	✓	50.0	51.5	103.1
cal 5 mdq	5	✓	100.0	102.3	102.3
cal 6 mdq	6	✓	250.0	251.5	100.6
cal 7 mdq	7	✓	500.0	495.7	99.1
cal 8 mdq	8	✓	1000.0	912.1	91.2

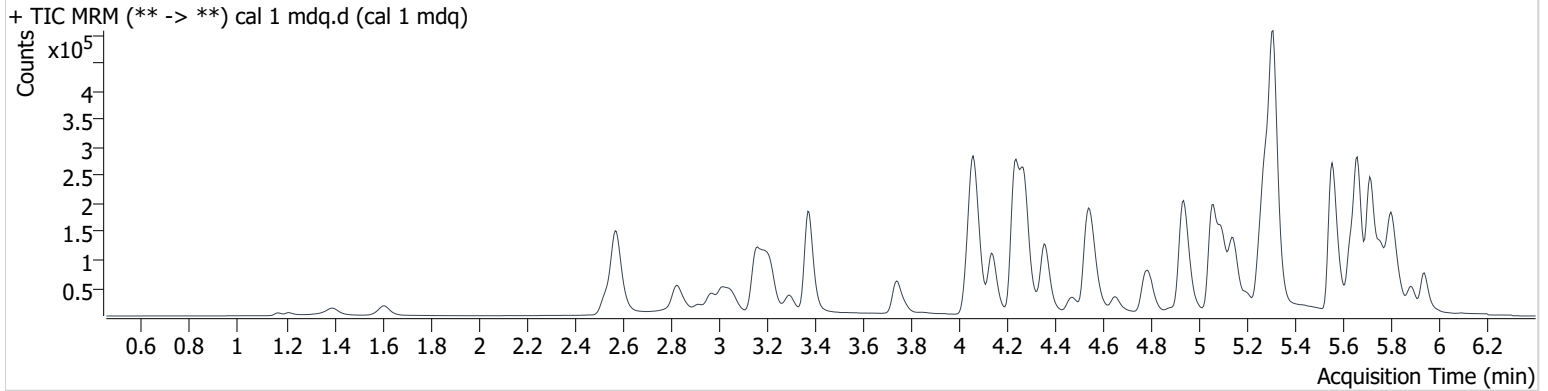
AM #28 Multi-Drug Quant. Results

Wylie

Batch results D:\MassHunter\Data\2024\am 27-28\040524\QuantResults\mdqp1 4-5-24 final.batch.bin
Calibration Last Update 4/9/2024 10:30:12 AM

Instrument	69679	Data File	cal 1 mdq.d
Type	Cal	Sample	cal 1 mdq
Acq. Method	mdqp1 121523.m	Operator	Britany Wylie
Sample Position	P2-A1	Comment	
Injection Volume	2		
Acq. Date-Time	4/5/2024 1:21:47 PM		

Sample Chromatogram



Name	RT	Resp.	S/N	Ratio	S/N	ISTD Resp.	Final Conc.
7-aminoclonazepam	4.263	5711	1982.2	112.92	3080.6	66507	4.896 ng/ml
Amphetamine	3.053	16427	∞	298.54	2745.7	104223	4.433 ng/ml
Buprenorphine	5.854	1994	∞	18.13	372.7	63541	0.483 ng/ml
Bupropion	4.799	34419	2769.1	77.56	4689.8	191442	4.840 ng/ml
Citalopram	5.256	29499	2918.2	36.40	∞	243260	4.920 ng/ml
Clonazepam	5.607	4123	1225.0	37.11	306.2	16985	5.063 ng/ml
Diphenhydramine	5.311	106369	7051.1	31.63	1117364.4	927653	5.168 ng/ml
Fentanyl	5.111	3716	554.2	128.12	796.2	309442	0.511 ng/ml
Fluoxetine	5.717	44867	∞	6.22	∞	323410	4.909 ng/ml
Hydroxyzine	5.720	34264	371.2	101.40	2647.2	927653	4.847 ng/ml
Lamotrigine	4.321	2203	3060.1	103.41	2748.4	93746	5.224 ng/ml
Methamphetamine	3.222	70040	218.4	34.85	1005.5	278168	4.700 ng/ml
Mitragynine	5.255	11142	34146.0	29.33	8927.0	28922	5.300 ng/ml
Morphine	1.171	1268	247.4	17.95	42.5	3388	5.101 ng/ml
Norbuprenorphine	5.017	492	784.1	106.63	2983.5	9965	0.550 ng/ml
Norfentanyl	4.087	1941	2226.7	27.36	∞	449001	0.521 ng/ml
Noroxycodone	2.937	5547	2282.4	51.01	∞	40601	4.962 ng/ml
Oxazepam	5.749	4909	1408.1	70.87	140.9	47918	5.125 ng/ml
Oxycodone	2.860	18182	∞	30.34	432.2	162390	4.938 ng/ml
Oxymorphone	1.395	6757	∞	42.42	∞	60465	4.967 ng/ml
Phentermine	3.781	8206	1760.5	12.65	497.1	160056	4.726 ng/ml
Quetiapine	5.574	40189	9751.0	70.08	5767.5	119334	5.160 ng/ml
Temazepam	5.811	21321	6461.9	29.94	297.3	167852	5.109 ng/ml
Trazodone	5.203	30930	4823.3	127.56	169805.0	334109	4.750 ng/ml
Xylazine	4.072	3816	84.7	130.02	892.8	164198	4.779 ng/ml
Zolpidem	4.957	60526	2284.0	29.68	∞	499021	4.903 ng/ml

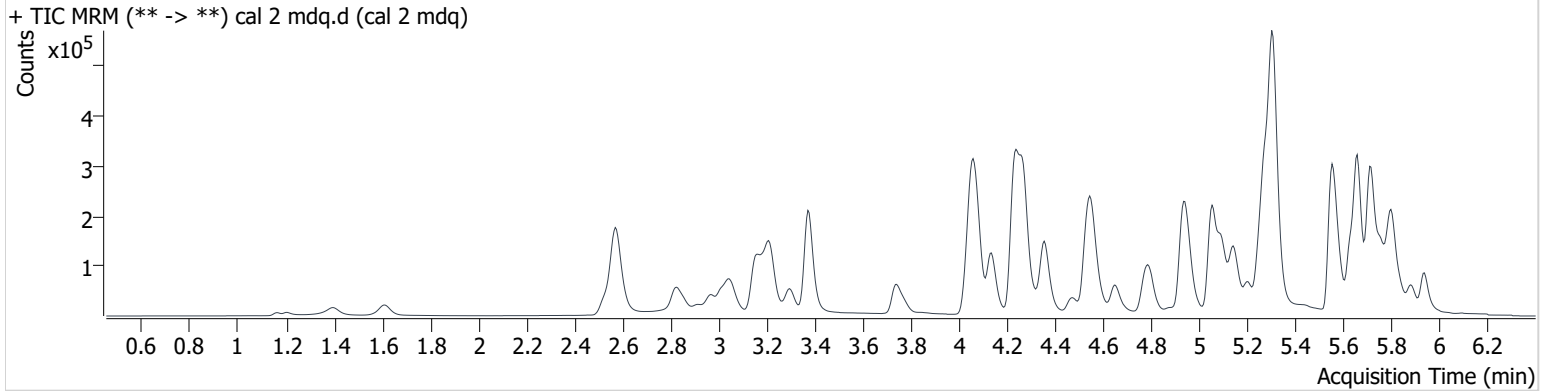
AM #28 Multi-Drug Quant. Results

B. Wylie

Batch results D:\MassHunter\Data\2024\am 27-28\040524\QuantResults\mdqp1 4-5-24 final.batch.bin
Calibration Last Update 4/9/2024 10:30:12 AM

Instrument	69679	Data File	cal 2 mdq.d
Type	Cal	Sample	cal 2 mdq
Acq. Method	mdqp1 121523.m	Operator	Britany Wylie
Sample Position	P2-B1	Comment	
Injection Volume	2		
Acq. Date-Time	4/5/2024 1:30:38 PM		

Sample Chromatogram



Name	RT	Resp.	S/N	Ratio	S/N	ISTD Resp.	Final Conc.
7-aminoclonazepam	4.258	13047	1911.9	115.88	2073.4	78234	10.023 ng/ml
Amphetamine	3.053	32981	2395.1	291.77	4097.1	105136	10.231 ng/ml
Buprenorphine	5.865	4403	12263.4	16.43	1524.2	61733	1.032 ng/ml
Bupropion	4.799	71832	61071.9	77.76	6286.9	194837	10.307 ng/ml
Citalopram	5.256	60266	1514.5	35.72	41227.1	245205	10.183 ng/ml
Clonazepam	5.607	8084	2528.1	35.26	2744.8	16197	9.769 ng/ml
Diphenhydramine	5.311	194469	∞	36.37	94956.7	917361	9.415 ng/ml
Fentanyl	5.111	6995	3098.9	127.38	1060.7	303237	0.961 ng/ml
Fluoxetine	5.717	86085	165459.1	6.05	11381.8	310762	10.118 ng/ml
Hydroxyzine	5.720	69693	1282.1	99.61	541.8	917361	10.445 ng/ml
Lamotrigine	4.311	4628	3988.2	96.90	39.4	92390	9.742 ng/ml
Methamphetamine	3.222	125619	4896.6	34.55	∞	275300	10.785 ng/ml
Mitragynine	5.255	22897	∞	28.17	17587.3	29604	9.302 ng/ml
Morphine	1.166	2537	186.2	20.05	125.2	3472	9.829 ng/ml
Norbuprenorphine	5.007	635	∞	116.36	2212.9	10254	0.765 ng/ml
Norfentanyl	4.082	3939	1080.3	29.13	3421.2	452843	0.976 ng/ml
Noroxycodone	2.937	10972	21388.3	53.22	∞	40991	9.898 ng/ml
Oxazepam	5.749	9112	474.5	67.61	226.4	47666	9.487 ng/ml
Oxycodone	2.855	35756	926.2	31.68	922.6	164345	9.934 ng/ml
Oxymorphone	1.395	14702	9743.4	44.81	∞	63005	10.016 ng/ml
Phentermine	3.776	17416	945.4	12.33	351.9	161139	10.723 ng/ml
Quetiapine	5.579	81241	34882.5	68.54	35772.5	124287	9.372 ng/ml
Temazepam	5.811	39072	26802.5	31.39	590.1	165243	9.546 ng/ml
Trazodone	5.203	64042	12529.4	127.55	2549.5	331040	10.470 ng/ml
Xylazine	4.072	7755	177.4	130.31	1068.8	163126	10.482 ng/ml
Zolpidem	4.957	124285	9374.3	28.24	∞	495197	10.159 ng/ml

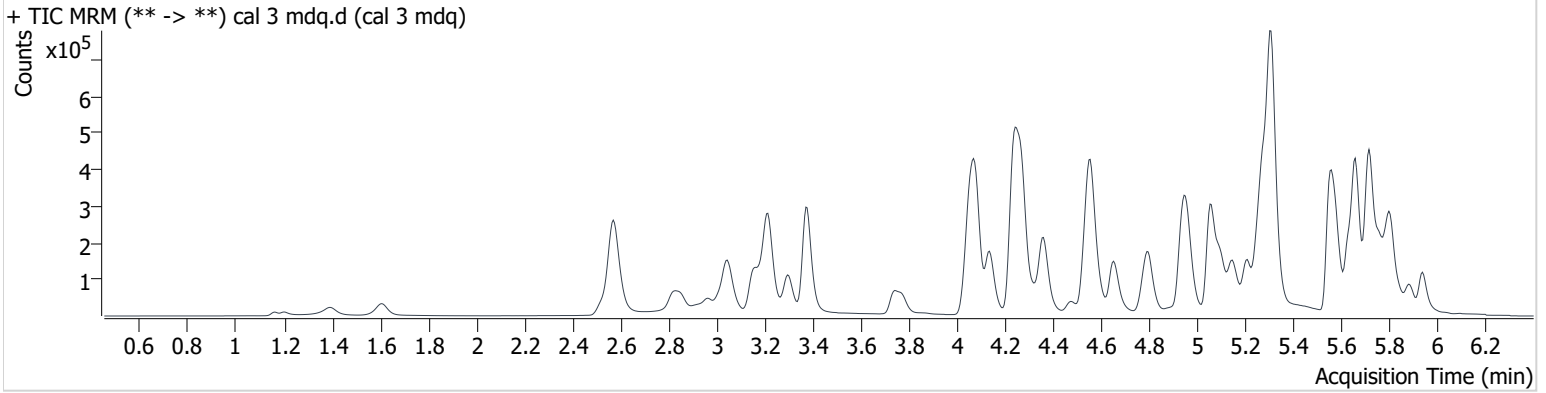
AM #28 Multi-Drug Quant. Results

Bylye

Batch results D:\MassHunter\Data\2024\am 27-28\040524\QuantResults\mdqp1 4-5-24 final.batch.bin
Calibration Last Update 4/9/2024 10:30:12 AM

Instrument	69679	Data File	cal 3 mdq.d
Type	Cal	Sample	cal 3 mdq
Acq. Method	mdqp1 121523.m	Operator	Britany Wylie
Sample Position	P2-C1	Comment	
Injection Volume	2		
Acq. Date-Time	4/5/2024 1:39:18 PM		
Sample Info.			

Sample Chromatogram



Name	RT	Resp.	S/N	Ratio	S/N	ISTD Resp.	Final Conc.
7-aminoclonazepam	4.263	35760	3494.3	115.91	3085.6	84085	26.409 ng/ml
Amphetamine	3.048	83158	7510.6	288.21	17063.0	108051	27.167 ng/ml
Buprenorphine	5.870	11947	12530.9	12.97	2446.2	61189	2.733 ng/ml
Bupropion	4.799	187759	114360.7	78.05	2786.5	203158	26.388 ng/ml
Citalopram	5.256	151208	3345.7	36.42	229322.6	248652	25.499 ng/ml
Clonazepam	5.607	22042	4235.0	32.88	5965.4	16300	25.431 ng/ml
Diphenhydramine	5.311	534991	1086886.1	34.14	∞	957295	24.552 ng/ml
Fentanyl	5.116	19037	1231.5	119.75	5656.3	317642	2.462 ng/ml
Fluoxetine	5.717	205102	221654.0	6.56	11672.1	297022	25.694 ng/ml
Hydroxyzine	5.720	173627	15737.5	100.45	24465.0	957295	25.562 ng/ml
Lamotrigine	4.316	10977	283.9	107.00	15177.8	90058	21.941 ng/ml
Methamphetamine	3.217	289415	∞	36.62	7828.0	285679	27.352 ng/ml
Mitragynine	5.255	58584	6830.4	27.26	30846.9	27773	23.073 ng/ml
Morphine	1.161	6312	739.4	20.02	352.7	3520	23.932 ng/ml
Norbuprenorphine	5.012	1820	2720.0	90.37	2205.2	10331	2.733 ng/ml
Norfentanyl	4.087	9347	1316.7	29.42	19791.9	446869	2.249 ng/ml
Noroxycodone	2.932	29582	∞	47.44	∞	41919	26.396 ng/ml
Oxazepam	5.749	21379	2452.3	64.47	∞	41450	25.446 ng/ml
Oxycodone	2.849	95414	∞	31.09	1581.7	169298	26.305 ng/ml
Oxymorphone	1.395	37913	∞	45.19	∞	63843	24.984 ng/ml
Phentermine	3.776	44463	1736.7	11.87	23271.9	169810	26.952 ng/ml
Quetiapine	5.579	218003	107620.2	66.28	51663.1	117984	25.244 ng/ml
Temazepam	5.811	91836	65254.4	31.09	573.3	146604	25.355 ng/ml
Trazodone	5.208	168887	26069.0	128.82	30153.2	348078	27.012 ng/ml
Xylazine	4.072	19708	228.6	127.50	942.0	169838	26.557 ng/ml
Zolpidem	4.962	319042	76567.4	30.08	443328.1	498334	25.930 ng/ml

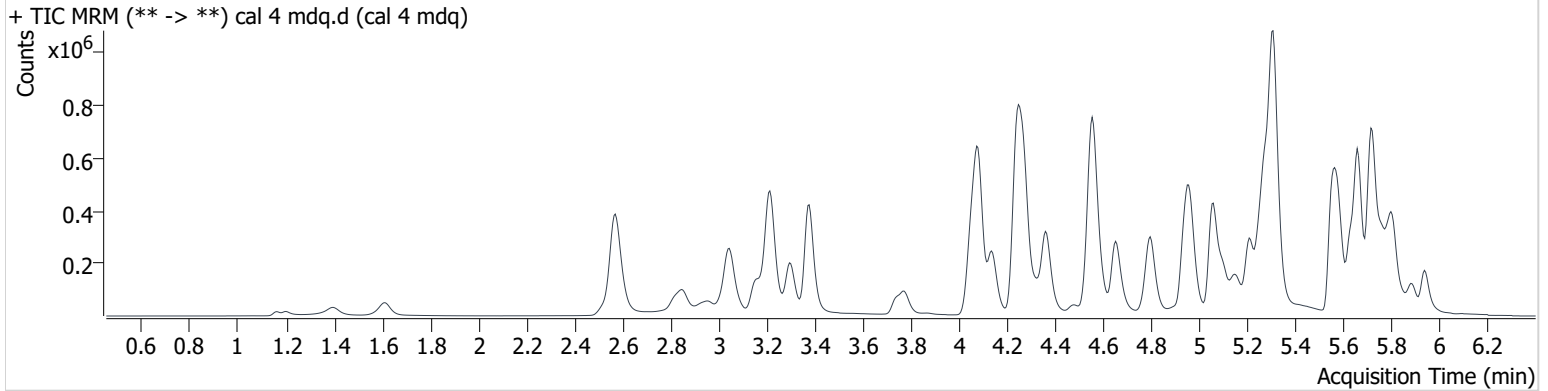
AM #28 Multi-Drug Quant. Results

Bylye

Batch results D:\MassHunter\Data\2024\am 27-28\040524\QuantResults\mdqp1 4-5-24 final.batch.bin
Calibration Last Update 4/9/2024 10:30:12 AM

Instrument	69679	Data File	cal 4 mdq.d
Type	Cal	Sample	cal 4 mdq
Acq. Method	mdqp1 121523.m	Operator	Britany Wylie
Sample Position	P2-D1	Comment	
Injection Volume	2		
Acq. Date-Time	4/5/2024 1:47:59 PM		

Sample Chromatogram



Name	RT	Resp.	S/N	Ratio	S/N	ISTD Resp.	Final Conc.
7-aminoclonazepam	4.263	70385	10469.7	117.69	8645.9	82457	53.557 ng/ml
Amphetamine	3.048	152727	24339.1	288.12	∞	105813	52.195 ng/ml
Buprenorphine	5.870	22277	55042.3	16.08	3814.6	62629	4.935 ng/ml
Bupropion	4.799	381262	24186.2	76.70	40112.0	210824	51.984 ng/ml
Citalopram	5.256	298098	23008.7	36.41	501026.0	246196	50.975 ng/ml
Clonazepam	5.607	38847	5237.3	35.87	698.1	15324	47.143 ng/ml
Diphenhydramine	5.316	1067478	6212953.4	33.56	98112.2	934819	49.996 ng/ml
Fentanyl	5.116	38219	2945.7	124.42	10810.5	311259	5.020 ng/ml
Fluoxetine	5.717	413478	∞	6.40	69262.3	290756	53.249 ng/ml
Hydroxyzine	5.720	338838	27892.9	104.28	24903.2	934819	51.534 ng/ml
Lamotrigine	4.316	21696	196.9	102.37	15146.3	82357	45.990 ng/ml
Methamphetamine	3.222	540284	∞	36.68	33232.6	289966	52.650 ng/ml
Mitragynine	5.255	110699	400783.2	27.78	63794.2	26919	43.722 ng/ml
Morphine	1.161	12491	1899.6	20.28	168.0	3362	49.437 ng/ml
Norbuprenorphine	5.017	3490	5393.8	96.32	2992.0	10684	5.325 ng/ml
Norfentanyl	4.087	18429	4743.4	29.21	31916.9	420274	4.638 ng/ml
Noroxycodone	2.932	58940	∞	53.60	∞	43092	51.334 ng/ml
Oxazepam	5.749	31918	3428.3	71.49	2446.8	32413	48.503 ng/ml
Oxycodone	2.849	187768	∞	29.99	3104.3	169612	52.017 ng/ml
Oxymorphone	1.395	76360	∞	43.40	∞	61031	52.277 ng/ml
Phentermine	3.776	86953	1887.6	11.61	1315.9	169836	53.354 ng/ml
Quetiapine	5.579	436009	126366.7	64.67	98494.8	118595	49.552 ng/ml
Temazepam	5.811	144276	119237.6	30.74	887.9	119933	48.729 ng/ml
Trazodone	5.208	340222	39151.9	125.01	18126.3	345354	55.358 ng/ml
Xylazine	4.072	38774	585.0	131.43	1663.4	167667	53.594 ng/ml
Zolpidem	4.962	627736	32758.0	30.30	219558.6	499539	50.907 ng/ml

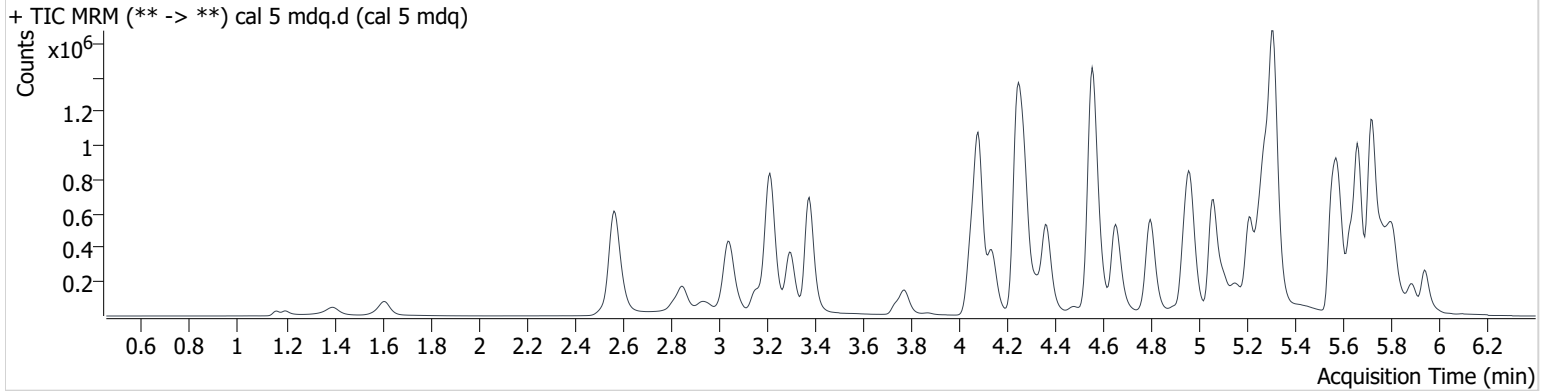
AM #28 Multi-Drug Quant. Results

Wylie

Batch results D:\MassHunter\Data\2024\am 27-28\040524\QuantResults\mdqp1 4-5-24 final.batch.bin
Calibration Last Update 4/9/2024 10:30:12 AM

Instrument	69679	Data File	cal 5 mdq.d
Type	Cal	Sample	cal 5 mdq
Acq. Method	mdqp1 121523.m	Operator	Britany Wylie
Sample Position	P2-E1	Comment	
Injection Volume	2		
Acq. Date-Time	4/5/2024 1:56:39 PM		
Sample Info.			

Sample Chromatogram



Name	RT	Resp.	S/N	Ratio	S/N	ISTD Resp.	Final Conc.
7-aminoclonazepam	4.263	133468	34876.3	111.23	44538.8	78844	106.750 ng/ml
Amphetamine	3.048	284989	878605.3	275.57	143411597 898139.0	108695	95.974 ng/ml
Buprenorphine	5.875	49223	31811.8	14.09	19756.0	64612	10.510 ng/ml
Bupropion	4.799	806706	124022.9	74.67	19246.5	222816	104.439 ng/ml
Citalopram	5.256	563597	∞	38.47	639386.1	231134	102.864 ng/ml
Clonazepam	5.607	71890	5115.1	36.27	4610.5	13083	101.478 ng/ml
Diphenhydramine	5.311	2032546	249640.4	33.49	1176527.2	914820	97.122 ng/ml
Fentanyl	5.116	78046	15343.7	131.15	12861.7	327740	9.715 ng/ml
Fluoxetine	5.717	746370	3517012.3	6.03	72258.6	273907	102.323 ng/ml
Hydroxyzine	5.720	655646	53152.7	101.01	72655.0	914820	102.337 ng/ml
Lamotrigine	4.316	41513	2540.2	96.93	41004.6	74430	95.992 ng/ml
Methamphetamine	3.217	1050425	24823.1	36.60	∞	305046	99.670 ng/ml
Mitragynine	5.255	221365	15412.8	29.78	95820.4	23217	99.619 ng/ml
Morphine	1.161	24746	4392.3	19.74	623.9	3450	95.339 ng/ml
Norbuprenorphine	5.017	6350	3724.5	98.10	13273.8	10981	9.658 ng/ml
Norfentanyl	4.087	33151	5819.7	28.69	9310.2	372203	9.348 ng/ml
Noroxycodone	2.932	117947	286624920687 87.5	53.76	149855161 2699030.0	44359	99.965 ng/ml
Oxazepam	5.749	48239	25619.1	66.28	7982.3	24119	98.418 ng/ml
Oxycodone	2.849	380181	∞	29.95	6132.3	172505	103.911 ng/ml
Oxymorphone	1.395	147860	∞	43.86	∞	59747	103.080 ng/ml
Phentermine	3.776	168241	∞	10.55	1527.7	179107	98.462 ng/ml
Quetiapine	5.579	871956	380212.3	63.26	118741.4	116069	100.540 ng/ml
Temazepam	5.816	236370	53527.9	31.01	∞	94709	101.140 ng/ml
Trazodone	5.208	678313	87011.7	126.93	134272.1	363787	105.222 ng/ml
Xylazine	4.072	75234	653.4	134.11	7427.7	170718	102.741 ng/ml
Zolpidem	4.962	1279249	108979.9	29.94	153959.5	494464	104.818 ng/ml

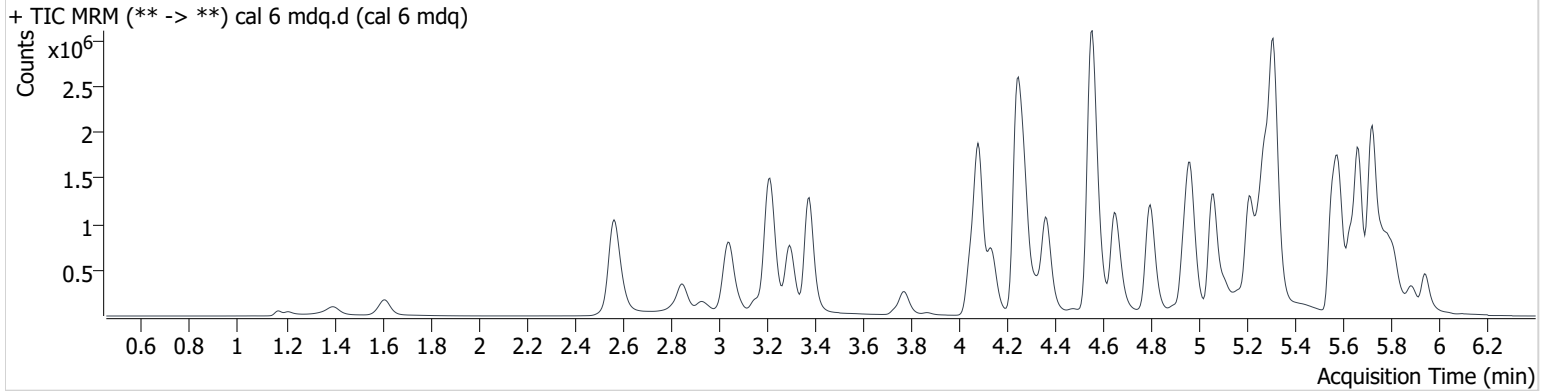
AM #28 Multi-Drug Quant. Results

Wylie

Batch results D:\MassHunter\Data\2024\am 27-28\040524\QuantResults\mdqp1 4-5-24 final.batch.bin
Calibration Last Update 4/9/2024 10:30:12 AM

Instrument	69679	Data File	cal 6 mdq.d
Type	Cal	Sample	cal 6 mdq
Acq. Method	mdqp1 121523.m	Operator	Britany Wylie
Sample Position	P2-F1	Comment	
Injection Volume	2		
Acq. Date-Time	4/5/2024 2:05:20 PM		

Sample Chromatogram



Name	RT	Resp.	S/N	Ratio	S/N	ISTD Resp.	Final Conc.
7-aminoclonazepam	4.263	219214	32281.9	111.88	45605.6	56891	243.690 ng/ml
Amphetamine	3.048	542621	55858.0	268.11	154515.0	101175	197.804 ng/ml
Buprenorphine	5.875	115168	152995.6	15.33	28006.7	66922	23.676 ng/ml
Bupropion	4.799	1878278	216837.5	72.92	157414.4	213551	254.239 ng/ml
Citalopram	5.251	1126866	208711.2	38.65	∞	190032	250.445 ng/ml
Clonazepam	5.607	131548	335845.8	35.66	3851.8	9664	250.480 ng/ml
Diphenhydramine	5.316	4441572	148361.1	32.17	459301.8	770085	251.862 ng/ml
Fentanyl	5.116	196480	8548.4	129.83	8933.4	318924	25.099 ng/ml
Fluoxetine	5.717	1401404	∞	6.69	258659.6	213976	246.378 ng/ml
Hydroxyzine	5.720	1352752	∞	106.03	137080.0	770085	251.482 ng/ml
Lamotrigine	4.311	80642	56532.5	98.91	89536.9	50698	271.477 ng/ml
Methamphetamine	3.217	2179524	∞	37.63	111872.9	305609	209.414 ng/ml
Mitragynine	5.255	490190	1176143.3	30.12	∞	18393	276.060 ng/ml
Morphine	1.171	61002	11287.7	20.15	2272.8	3316	244.273 ng/ml
Norbuprenorphine	5.012	15514	28184.7	96.99	23371.1	10277	25.697 ng/ml
Norfentanyl	4.087	57442	10261.5	29.90	218705.2	249001	24.101 ng/ml
Noroxycodone	2.927	257706	∞	53.36	∞	40633	238.704 ng/ml
Oxazepam	5.749	70121	20262.1	71.22	2100.7	13506	255.353 ng/ml
Oxycodone	2.849	860042	∞	29.78	∞	162129	250.616 ng/ml
Oxymorphone	1.395	353253	∞	43.92	∞	57671	254.654 ng/ml
Phentermine	3.776	346880	3472.2	9.85	2851.7	171204	213.173 ng/ml
Quetiapine	5.579	1826276	∞	63.54	616681.2	96982	250.992 ng/ml
Temazepam	5.816	358943	170072.6	30.78	26939.3	59048	246.401 ng/ml
Trazodone	5.208	1507925	109359.5	132.90	1546240.2	361084	236.283 ng/ml
Xylazine	4.067	165228	1623.9	133.02	3231.2	154453	250.361 ng/ml
Zolpidem	4.962	2836978	576228.8	29.54	114015.5	450442	255.189 ng/ml

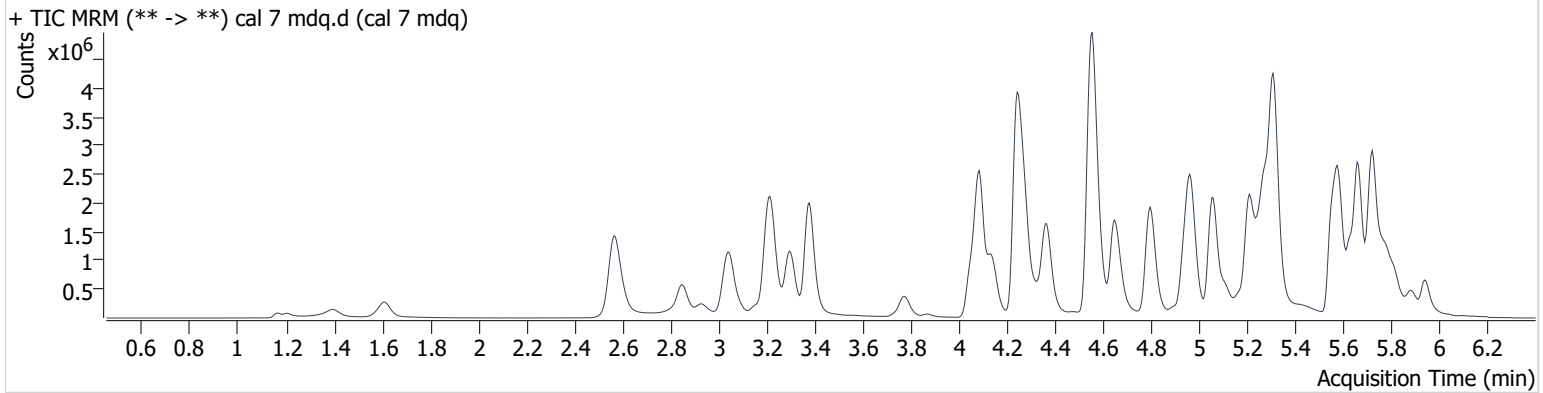
AM #28 Multi-Drug Quant. Results

Wylie

Batch results D:\MassHunter\Data\2024\am 27-28\040524\QuantResults\mdqp1 4-5-24 final.batch.bin
Calibration Last Update 4/9/2024 10:30:12 AM

Instrument	69679	Data File	cal 7 mdq.d
Type	Cal	Sample	cal 7 mdq
Acq. Method	mdqp1 121523.m	Operator	Britany Wylie
Sample Position	P2-G1	Comment	
Injection Volume	2		
Acq. Date-Time	4/5/2024 2:14:01 PM		

Sample Chromatogram



Name	RT	Resp.	S/N	Ratio	S/N	ISTD Resp.	Final Conc.
7-aminoclonazepam	4.263	253712	29847.8	110.48	41228.1	37841	424.430 ng/ml
Amphetamine	3.048	783373	∞	263.58	∞	87285	331.970 ng/ml
Buprenorphine	5.870	194822	612202.9	15.21	52559.0	57945	46.206 ng/ml
Bupropion	4.799	3186385	363286.7	71.58	702316.8	190954	482.666 ng/ml
Citalopram	5.251	1555659	105631.6	40.18	2030611.8	137393	478.398 ng/ml
Clonazepam	5.607	194916	36783.9	34.17	5885.8	6893	519.676 ng/ml
Diphenhydramine	5.316	6986586	3391143.7	30.98	336052.9	575124	530.298 ng/ml
Fentanyl	5.116	363179	61805.3	134.26	16512.6	288999	51.173 ng/ml
Fluoxetine	5.717	1927944	281646.6	6.51	163437.4	151347	479.505 ng/ml
Hydroxyzine	5.725	1989791	419431.6	109.96	203835.9	575124	495.742 ng/ml
Lamotrigine	4.311	114639	154226.1	97.14	26095.3	37391	522.139 ng/ml
Methamphetamine	3.217	3407354	∞	36.55	153514.1	289415	347.522 ng/ml
Mitragynine	5.249	750865	82991.4	31.69	395881.5	14238	544.981 ng/ml
Morphine	1.166	102217	39091.6	19.73	2178.8	2582	525.450 ng/ml
Norbuprenorphine	5.012	25611	37563.5	103.67	45603.9	8949	48.988 ng/ml
Norfentanyl	4.093	76172	6639.8	28.56	∞	145299	54.679 ng/ml
Noroxycodone	2.927	428904	∞	52.53	∞	32367	498.939 ng/ml
Oxazepam	5.744	99026	55169.0	72.22	12582.8	9307	523.186 ng/ml
Oxycodone	2.844	1494200	∞	29.39	82220.6	144868	487.628 ng/ml
Oxymorphone	1.395	576575	∞	44.28	∞	48876	490.132 ng/ml
Phentermine	3.776	555888	1804.2	9.20	4402.6	158177	370.256 ng/ml
Quetiapine	5.579	2851089	3190187.6	62.29	556887.5	75529	502.444 ng/ml
Temazepam	5.816	431907	∞	32.61	4837.8	34579	506.337 ng/ml
Trazodone	5.208	2479502	851205.9	134.89	332285.4	343296	409.019 ng/ml
Xylazine	4.067	267411	4743.8	135.08	1698.8	130982	478.414 ng/ml
Zolpidem	4.967	4609560	426852.2	30.13	178891.6	381350	489.767 ng/ml

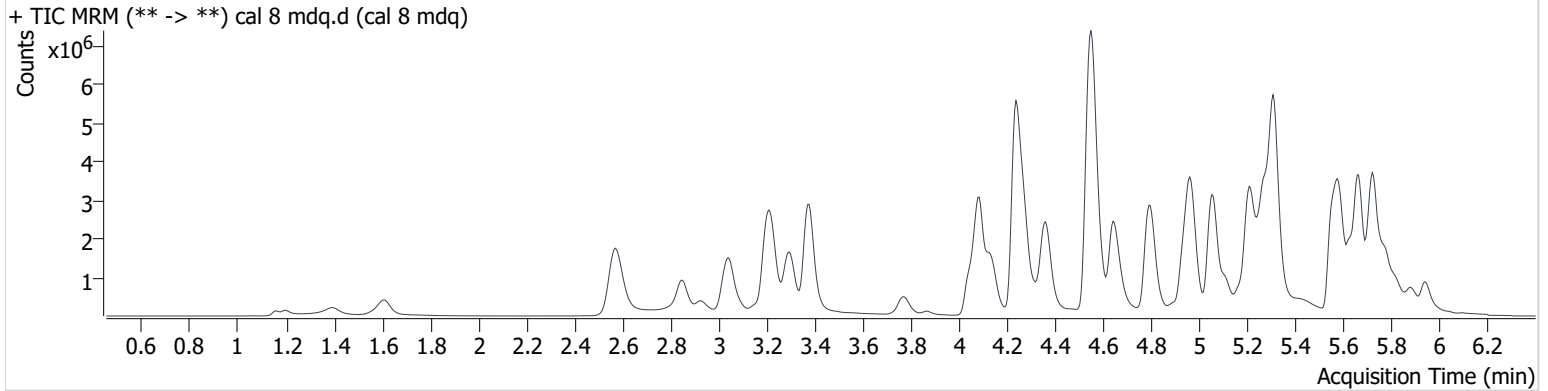
AM #28 Multi-Drug Quant. Results

Bylye

Batch results D:\MassHunter\Data\2024\am 27-28\040524\QuantResults\mdqp1 4-5-24 final.batch.bin
Calibration Last Update 4/9/2024 10:30:12 AM

Instrument	69679	Data File	cal 8 mdq.d
Type	Cal	Sample	cal 8 mdq
Acq. Method	mdqp1 121523.m	Operator	Britany Wylie
Sample Position	P2-H1	Comment	
Injection Volume	2		
Acq. Date-Time	4/5/2024 2:31:24 PM		

Sample Chromatogram



Name	RT	Resp.	S/N	Ratio	S/N	ISTD Resp.	Final Conc.
7-aminoclonazepam	4.258	227835	29720.2	109.99	143042.5	20165	715.621 ng/ml
Amphetamine	3.048	1016698	∞	258.46	11767492.2	78495	479.723 ng/ml
Buprenorphine	5.875	354011	∞	15.01	55200.6	59663	81.504 ng/ml
Bupropion	4.799	5236308	717205.1	69.51	1400815.2	172288	879.419 ng/ml
Citalopram	5.251	1986584	230459.5	39.99	∞	86459	971.018 ng/ml
Clonazepam	5.607	252540	198164.2	33.57	51358.6	4665	994.254 ng/ml
Diphenhydramine	5.316	10045450	264674.4	30.08	531518.3	436822	1003.732 ng/ml
Fentanyl	5.111	703237	53379.0	136.22	17611.3	278560	102.780 ng/ml
Fluoxetine	5.717	2423951	1956951.1	6.61	304120.7	96497	945.857 ng/ml
Hydroxyzine	5.725	2779556	291990.4	112.12	343958.3	436822	912.138 ng/ml
Lamotrigine	4.301	145905	154076.5	88.94	1413.3	22695	1093.512 ng/ml
Methamphetamine	3.217	4723883	3142.2	37.34	∞	281057	497.319 ng/ml
Mitragynine	5.249	1130400	240851.3	33.49	651461.2	11416	1022.081 ng/ml
Morphine	1.161	163410	10201.4	19.74	11161.7	2028	1069.587 ng/ml
Norbuprenorphine	5.012	44757	202209.9	96.03	65443.7	7663	100.283 ng/ml
Norfentanyl	4.093	84545	17417.1	29.88	101242.9	75801	116.254 ng/ml
Noroxycodone	2.927	709054	∞	49.20	∞	27162	983.052 ng/ml
Oxazepam	5.749	145773	426946.5	72.48	57560.2	7266	986.388 ng/ml
Oxycodone	2.844	2528416	7554.8	29.33	4734.4	131443	909.727 ng/ml
Oxymorphone	1.390	925188	∞	44.19	∞	41301	930.424 ng/ml
Phentermine	3.776	833620	3903.2	8.89 Low	4821.2	138435	634.915 ng/ml
Quetiapine	5.584	3995605	480171.8	62.04	1093518.0	51601	1029.929 ng/ml
Temazepam	5.816	536478	152978.5	32.36	16731.6	21217	1025.067 ng/ml
Trazodone	5.208	3848377	7321823.1	135.88	689280.4	336131	648.652 ng/ml
Xylazine	4.067	403981	2190.1	137.70	9140.9	108131	876.040 ng/ml
Zolpidem	4.967	7258792	559642.3	30.50	26300954.8	326933	899.629 ng/ml